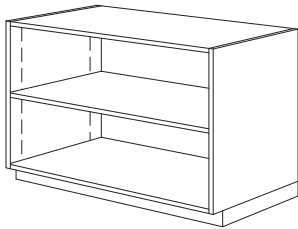


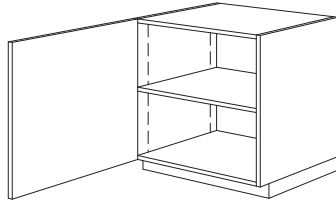
# CASEWORK DESIGN SERIES (CDS)

(Page 2 of 20)

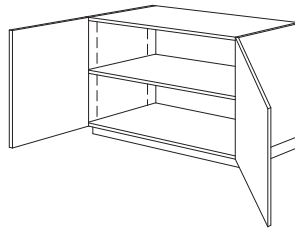
## 100 SERIES - BASE CABINETS w/o DRAWERS



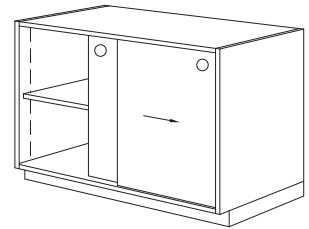
100



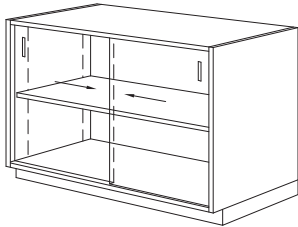
101



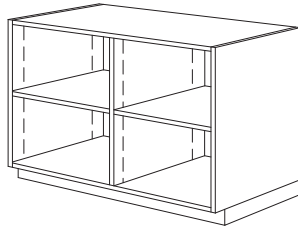
102



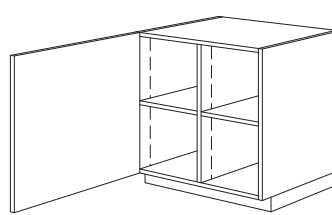
106



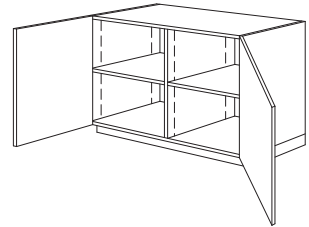
107



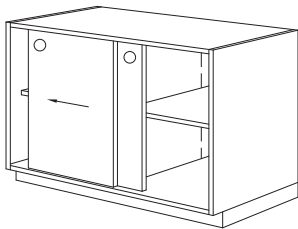
110



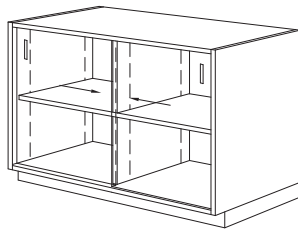
111



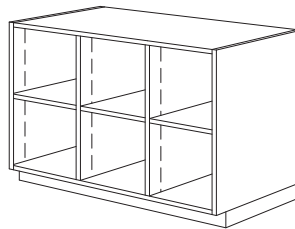
112



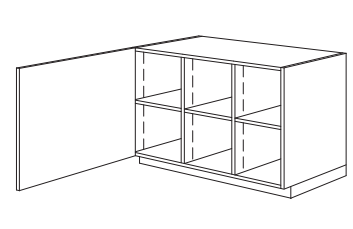
116



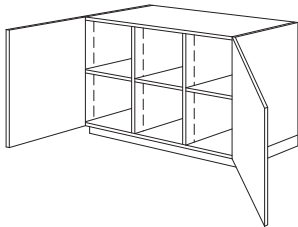
117



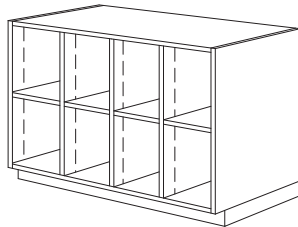
120



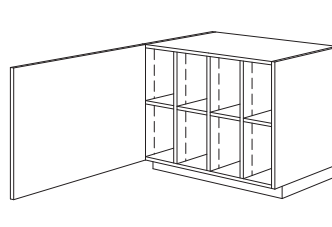
121



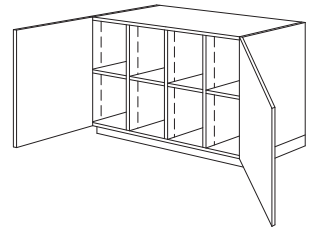
122



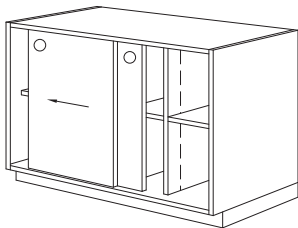
130



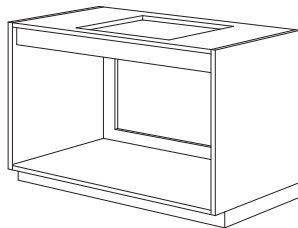
131



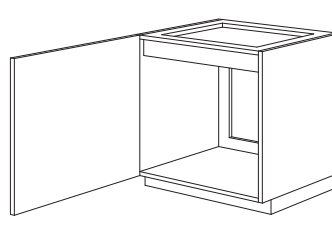
132



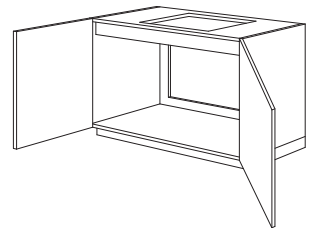
136



140  
Removable Back



141  
Removable Back

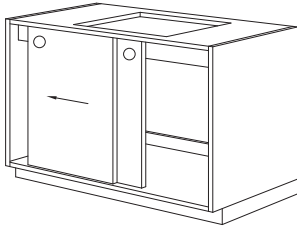


142  
Removable Back

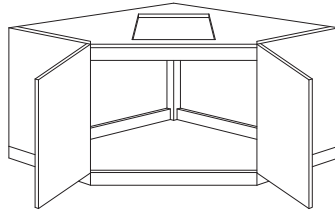
# CASEWORK DESIGN SERIES (CDS)

(Page 3 of 20)

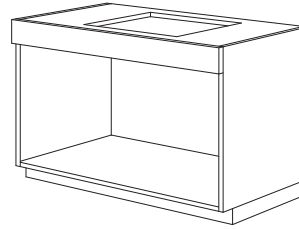
## 100 SERIES - BASE CABINETS w/o DRAWERS (continued)



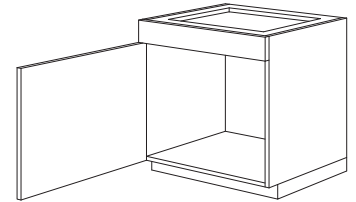
**146**  
Removable Back



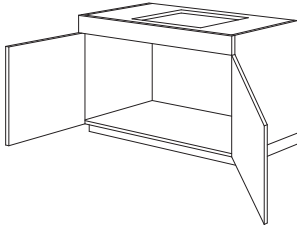
**148**  
Removable Back



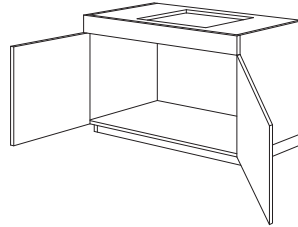
**150**



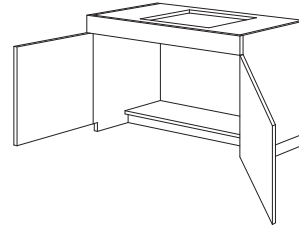
**151**



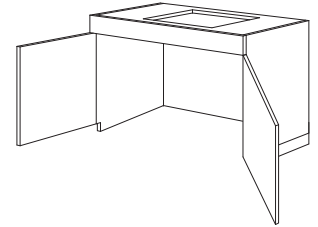
**152**



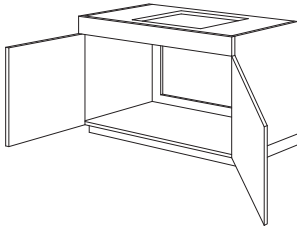
**153**  
Removable Base/Toe



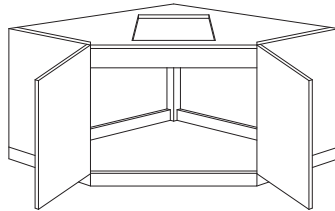
**154**



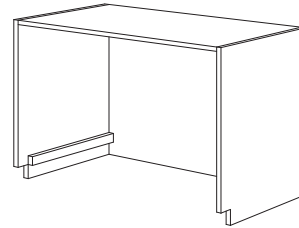
**155**



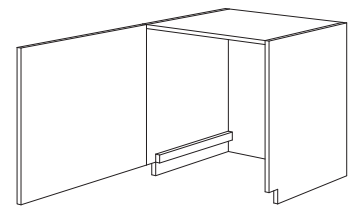
**156**  
Removable Back



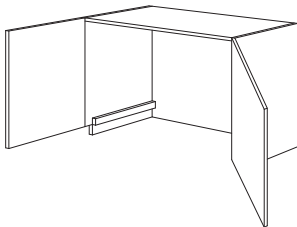
**157**  
Removable Back



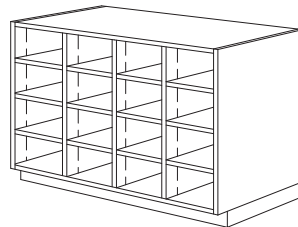
**160**  
Cart Storage



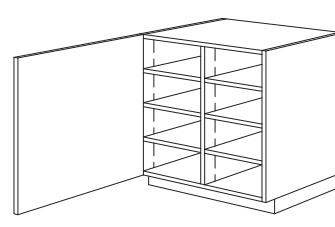
**161**  
Cart Storage



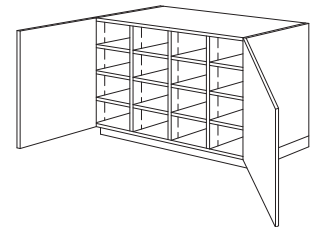
**162**  
Cart Storage



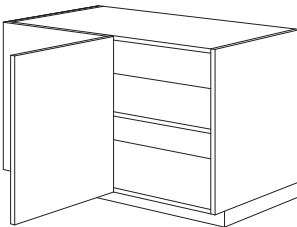
**170**



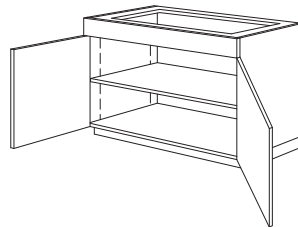
**171**



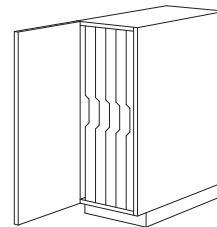
**172**



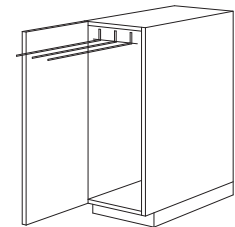
**176**



**177**



**178**



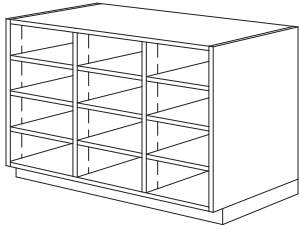
**179**  
Retractable Towel Rack

**A**

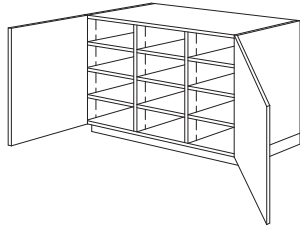
# CASEWORK DESIGN SERIES (CDS)

(Page 4 of 20)

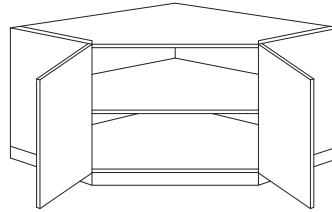
## 100 SERIES - BASE CABINETS w/o DRAWERS (continued)



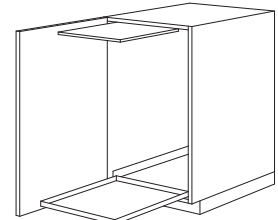
180



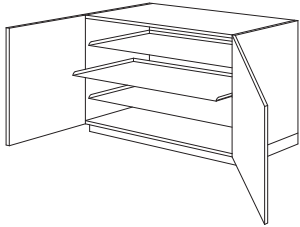
182



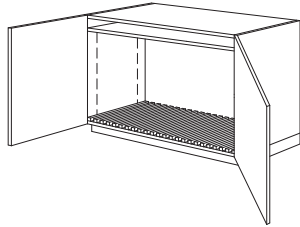
186



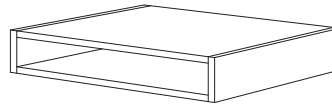
187  
Sliding Tray & Lift Shelf



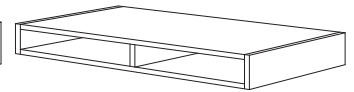
188



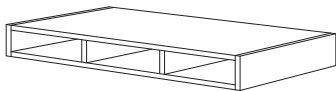
189  
Drawing Board Rack



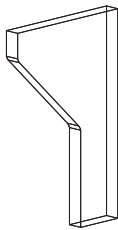
190



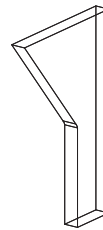
191



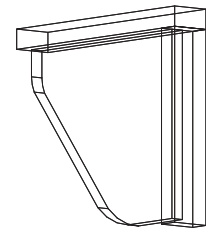
192



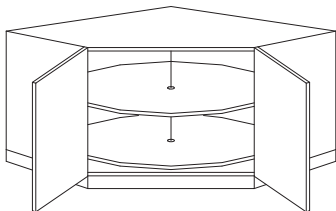
193



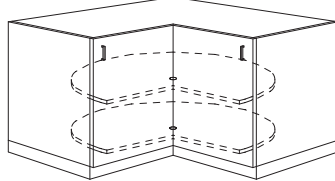
194



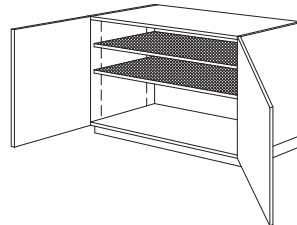
195



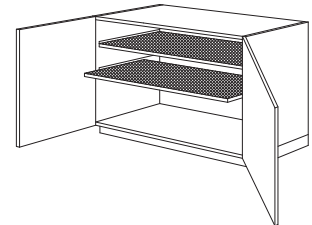
196



197



198

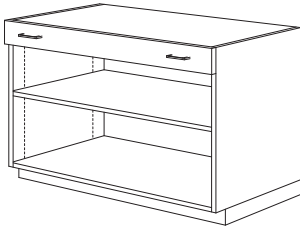


199

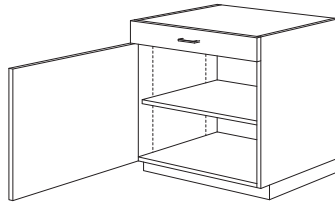
# CASEWORK DESIGN SERIES (CDS)

(Page 5 of 20)

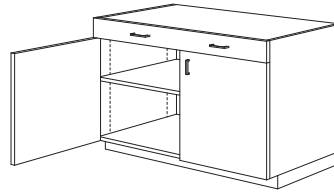
## 200 SERIES - BASE CABINETS w/ DRAWERS



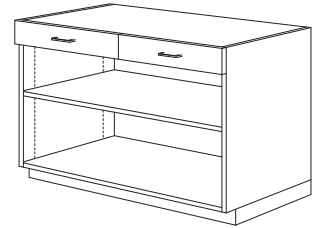
210



211



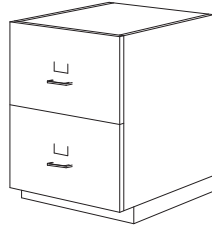
212



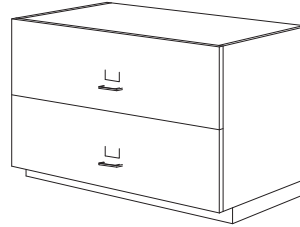
220



222



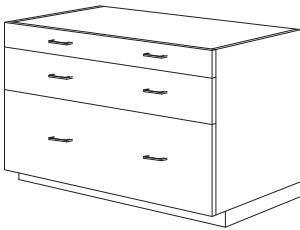
223



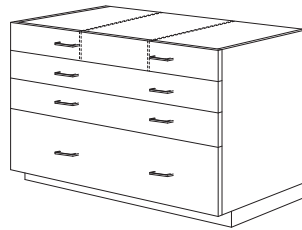
224



230



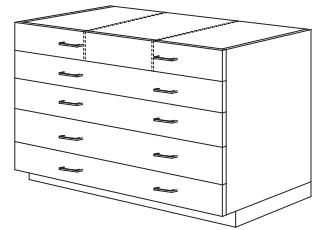
231



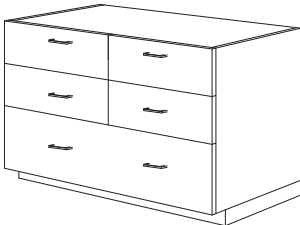
240



242



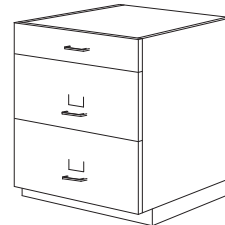
250



251



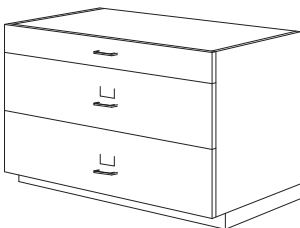
252



253



254



255



260



261



262

## CASEWORK DESIGN SERIES (CDS)

(Page 6 of 20)

### 200 SERIES - BASE CABINETS w/ DRAWERS

(continued)



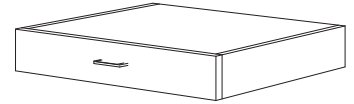
270



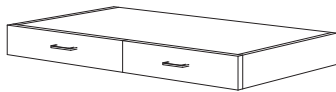
271



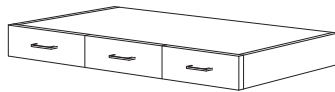
272



290



291

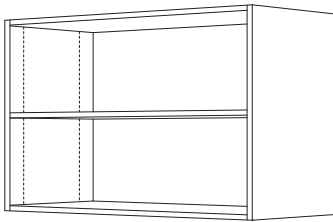


292

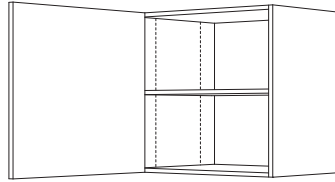
# CASEWORK DESIGN SERIES (CDS)

(Page 7 of 20)

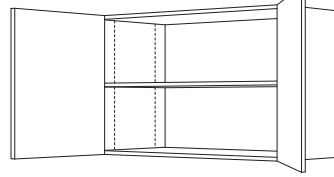
## 300 SERIES - WALL-HUNG CABINETS



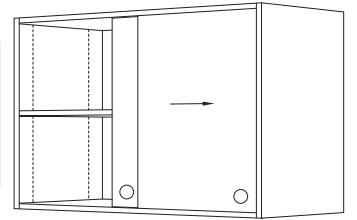
300



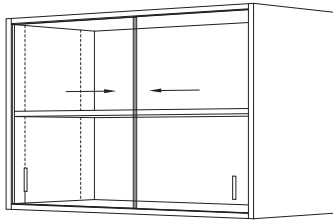
301



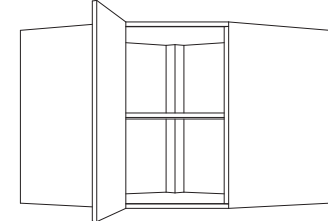
302



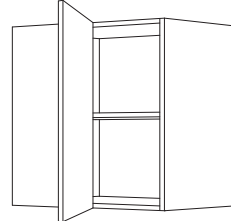
306



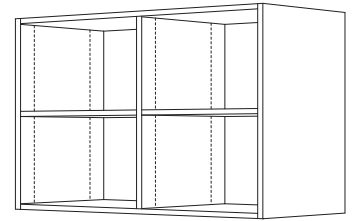
307



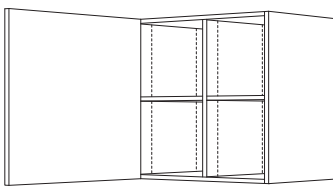
308  
Angle Corner



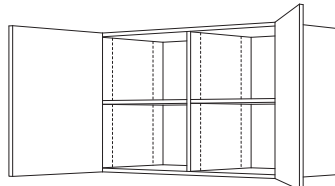
309  
Blind Corner



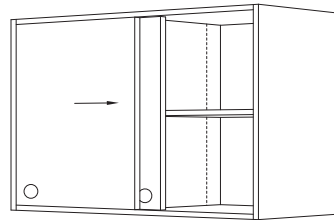
310



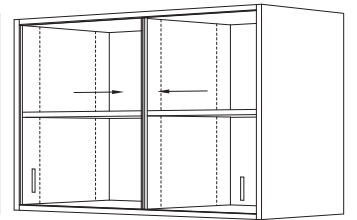
311



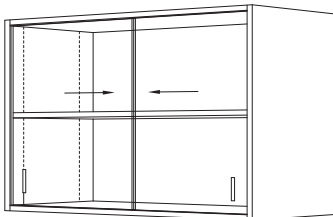
312



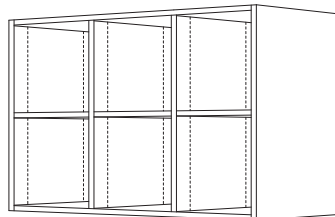
316



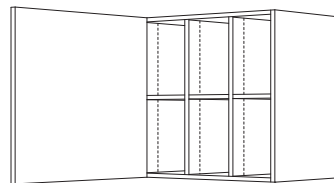
317



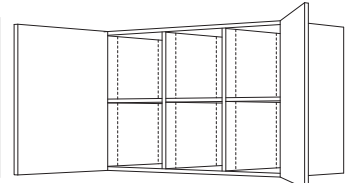
318



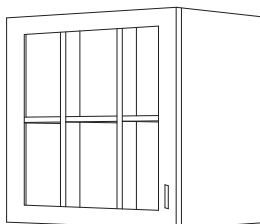
320



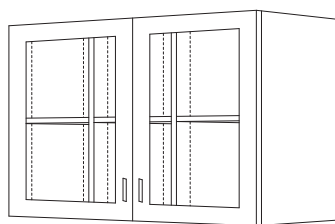
321



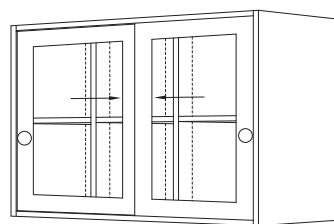
322



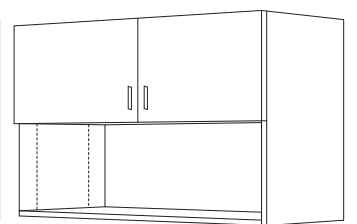
323



324



325



326

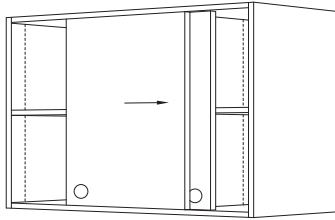
**A**

# CASEWORK DESIGN SERIES (CDS)

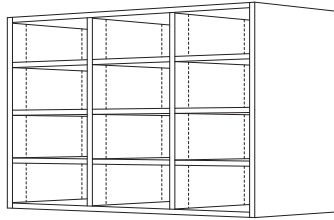
(Page 8 of 20)

## 300 SERIES - WALL-HUNG CABINETS

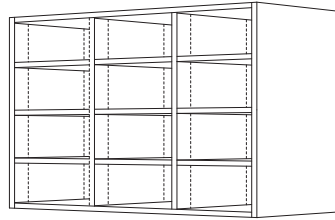
(continued)



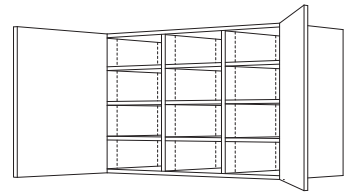
336



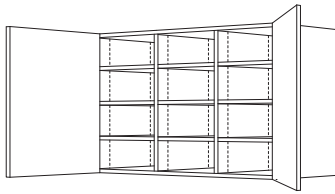
340



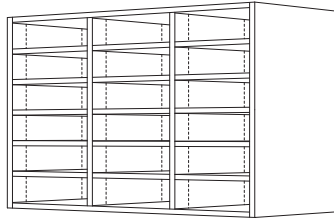
341  
Open Back



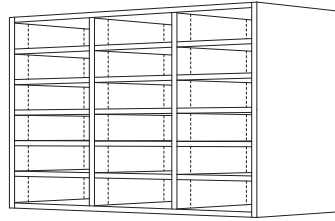
342



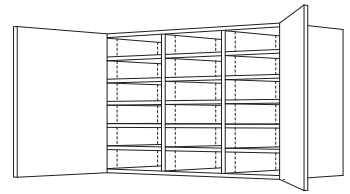
343  
Open Back



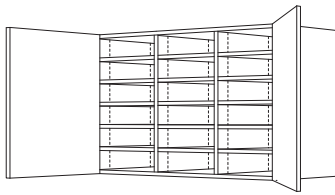
350



351  
Open Back



352

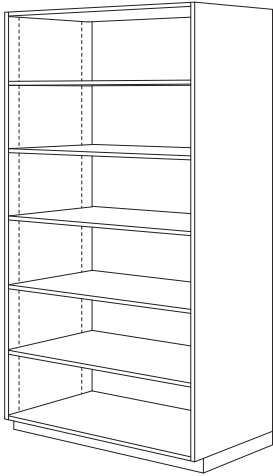


353  
Open Back

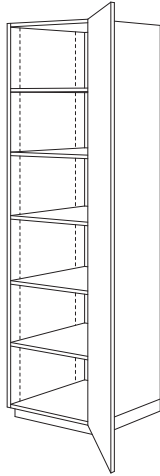
# CASEWORK DESIGN SERIES (CDS)

(Page 9 of 20)

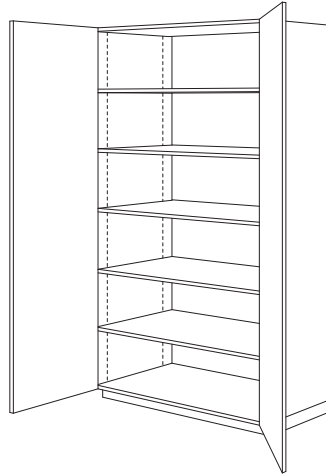
## 400 SERIES - TALL STORAGE CABINETS



400



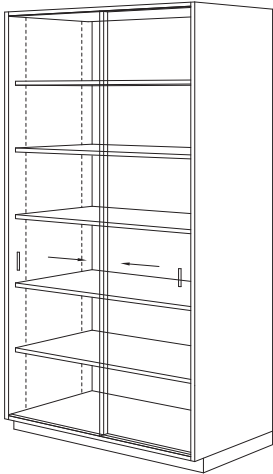
401



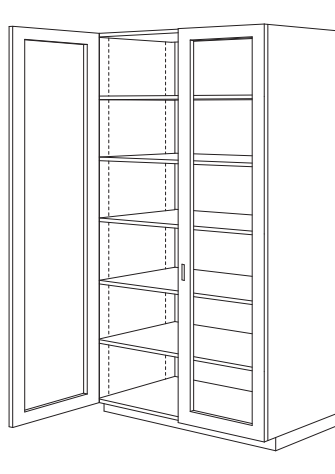
402



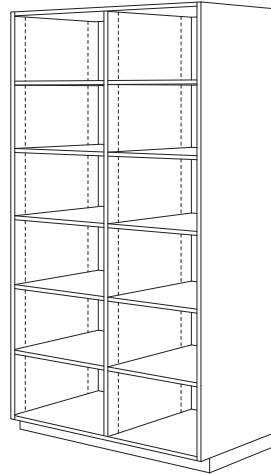
406



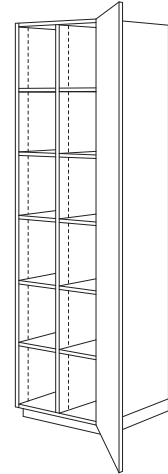
407



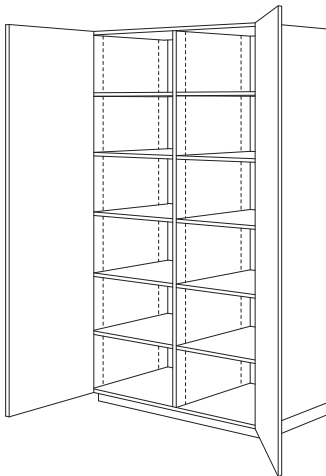
408



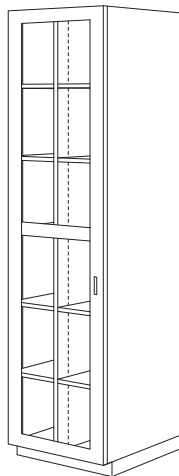
410



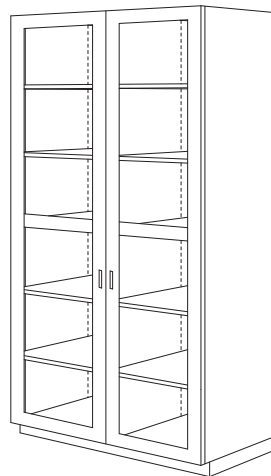
411



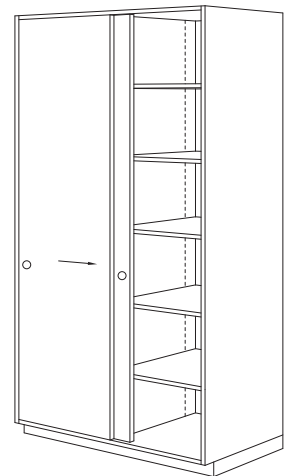
412



413



414



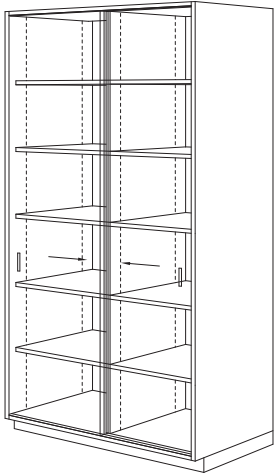
416

A

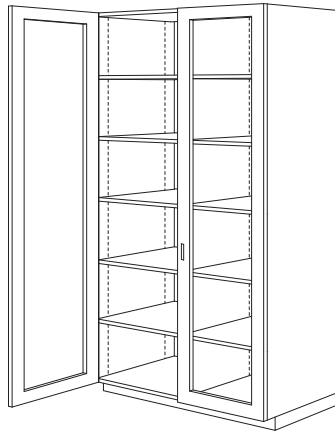
# CASEWORK DESIGN SERIES (CDS)

(Page 10 of 20)

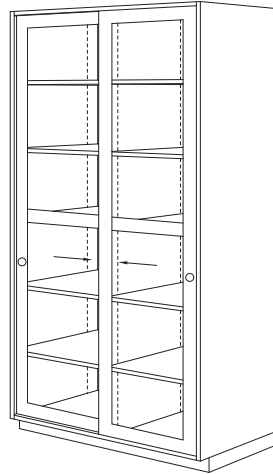
## 400 SERIES - TALL STORAGE CABINETS (continued)



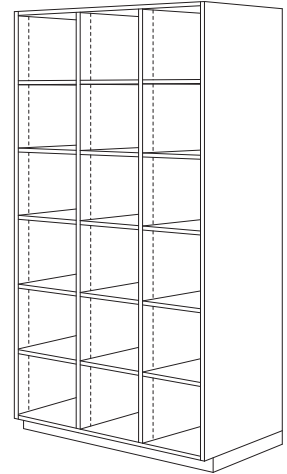
417



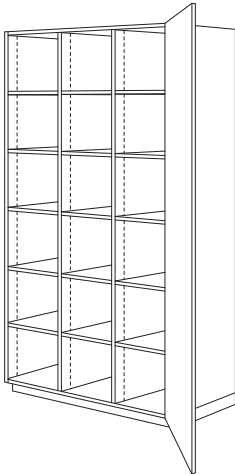
418



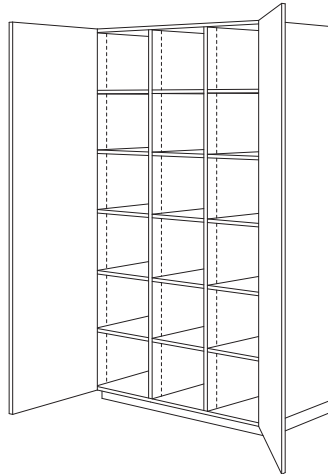
419



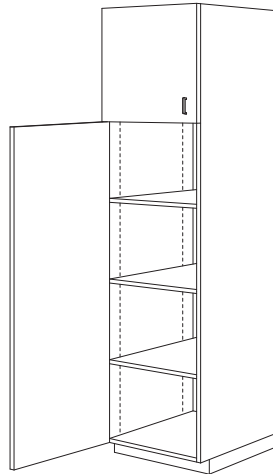
420



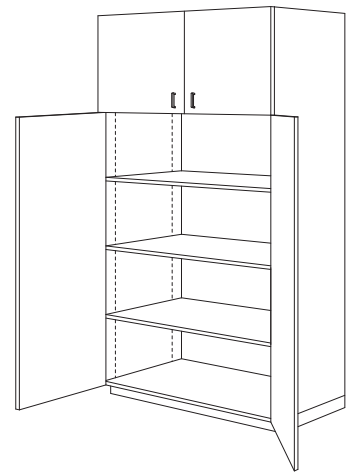
421



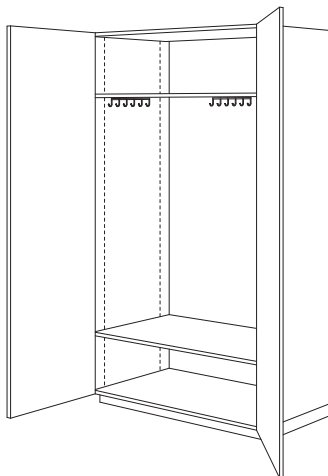
422



423



424

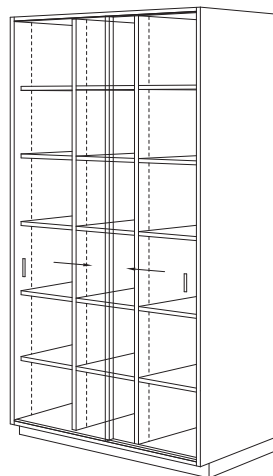


425

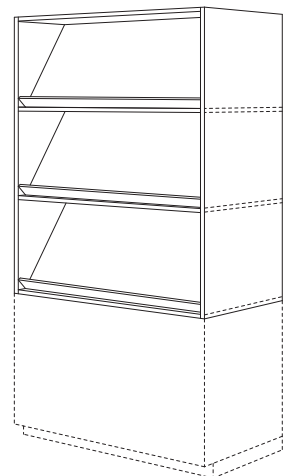
Dust Panel, Integral or Separate



426



427



429

Hutch w/ Fixed Shelves

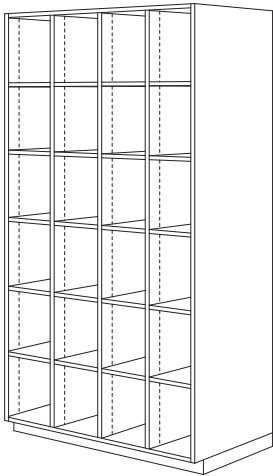
A

# CASEWORK DESIGN SERIES (CDS)

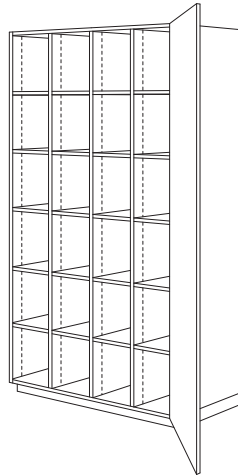
(Page 11 of 20)

## 400 SERIES - TALL STORAGE CABINETS

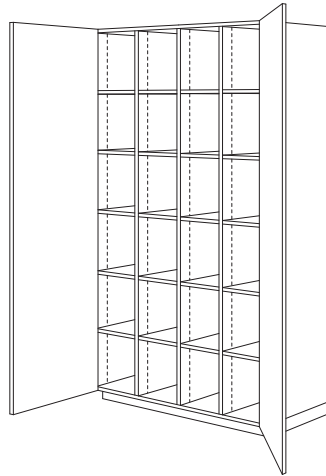
(continued)



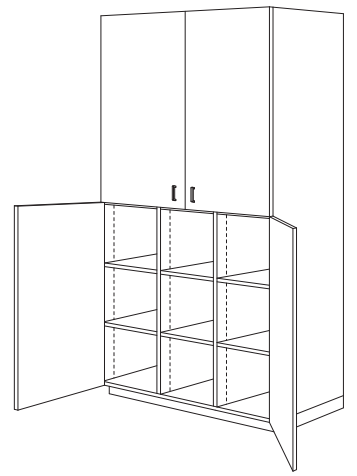
430



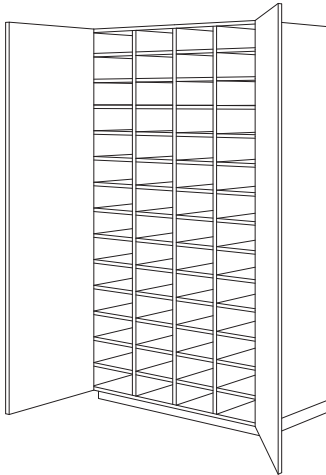
431



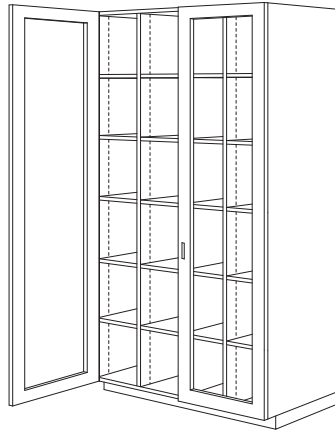
432



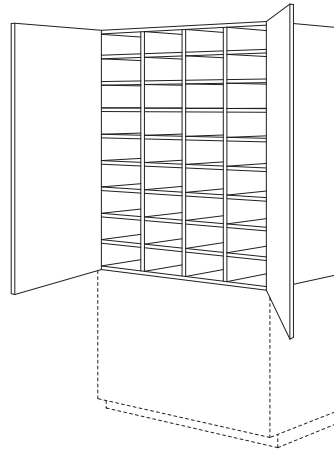
434



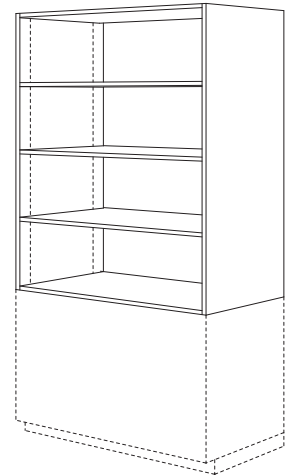
435



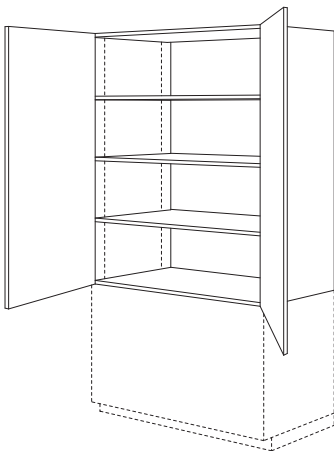
438



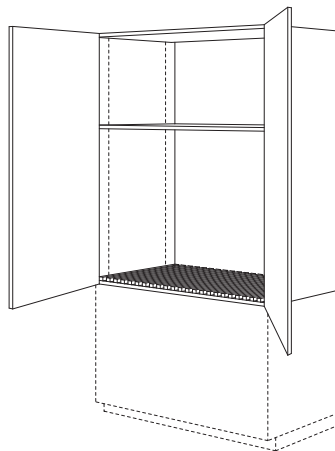
439  
Hutch



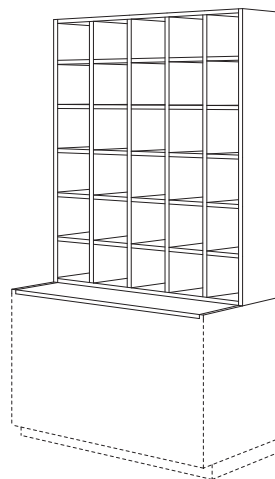
440  
Hutch



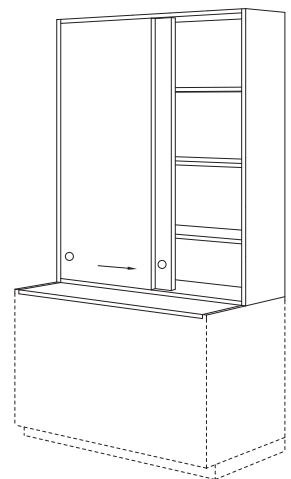
441  
Hutch



443  
Hutch



444  
Hutch



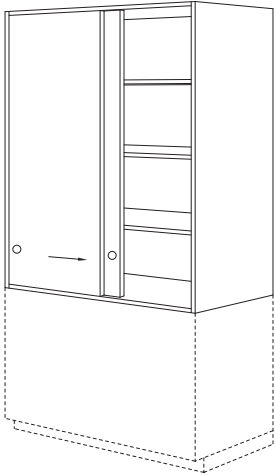
445  
Hutch

A

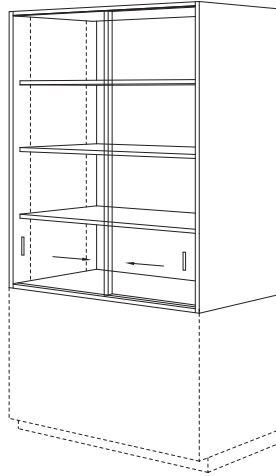
# CASEWORK DESIGN SERIES (CDS)

(Page 12 of 20)

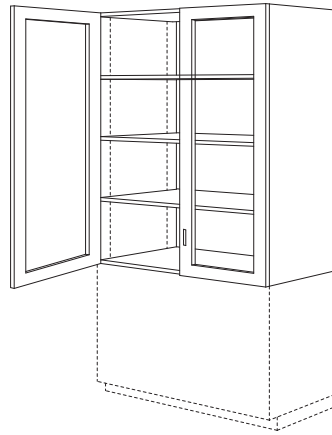
## 400 SERIES - TALL STORAGE CABINETS (continued)



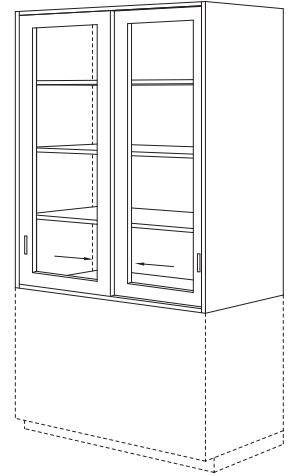
**446**  
Hutch



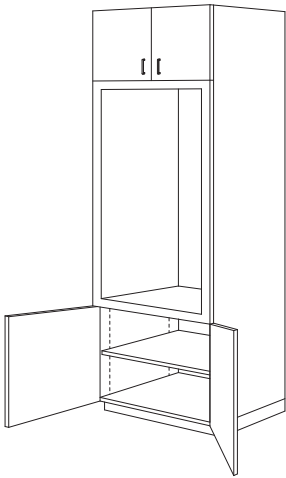
**447**  
Hutch



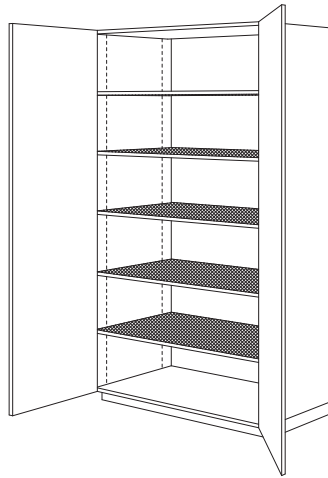
**448**  
Hutch



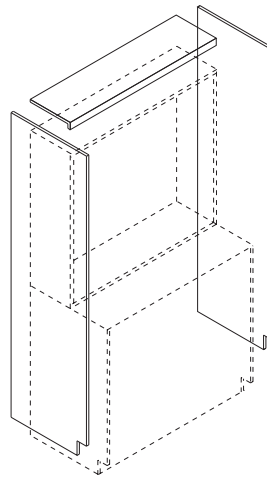
**449**  
Hutch



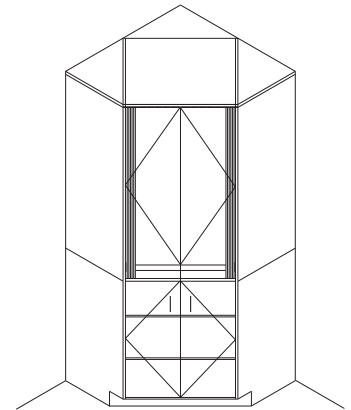
**454**



**459**



**460**

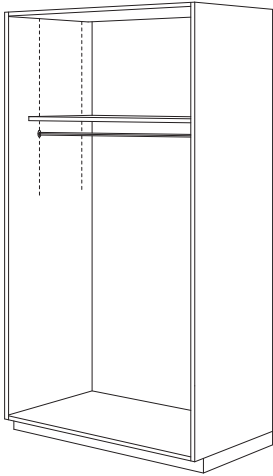


**461**

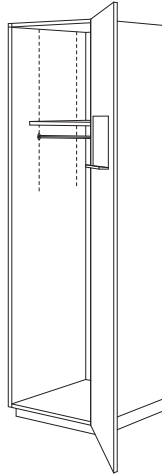
# CASEWORK DESIGN SERIES (CDS)

(Page 13 of 20)

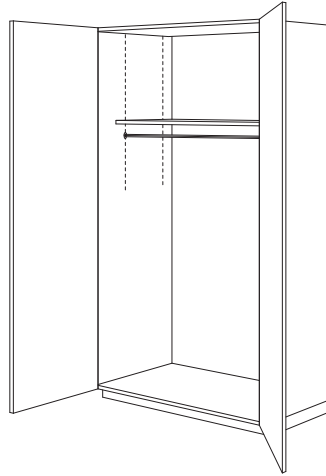
## 500 SERIES - WARDROBE CABINETS



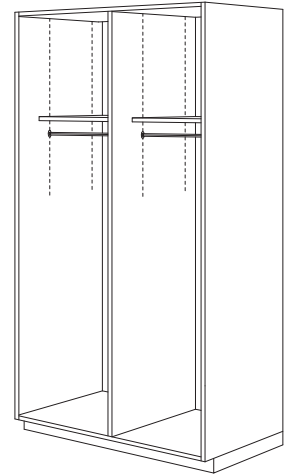
500



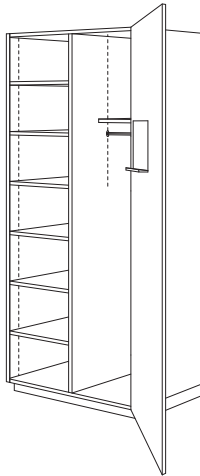
501



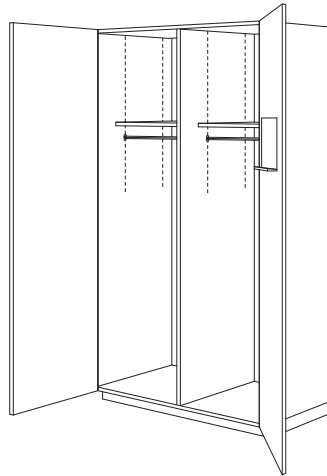
502



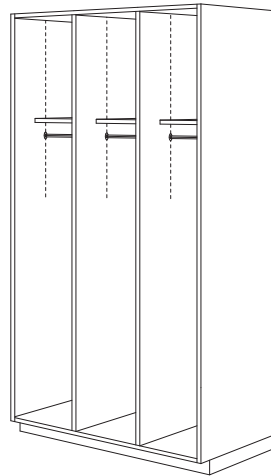
510



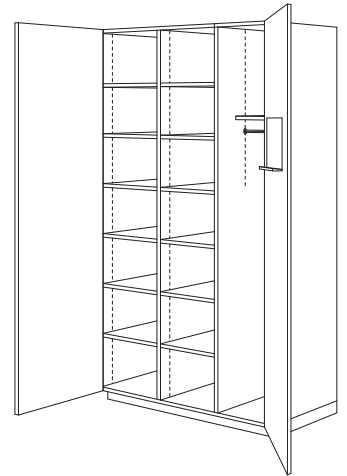
511



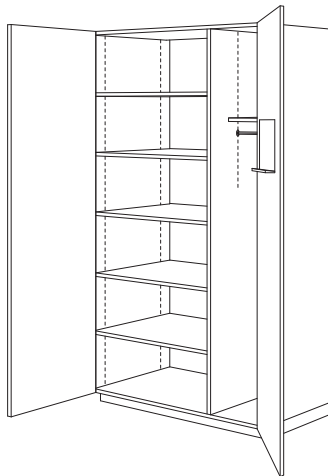
512



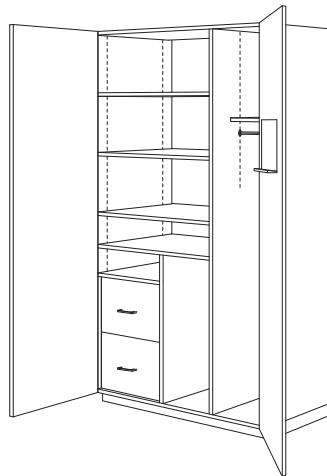
520



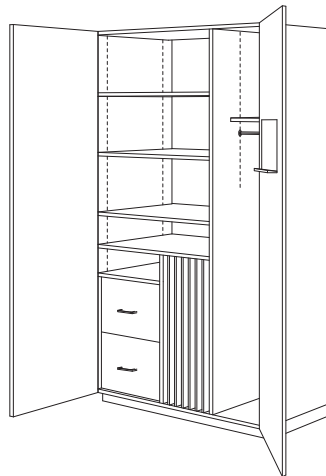
522



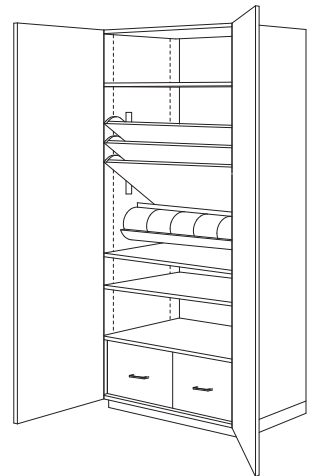
530



531



532



533  
See General Notes

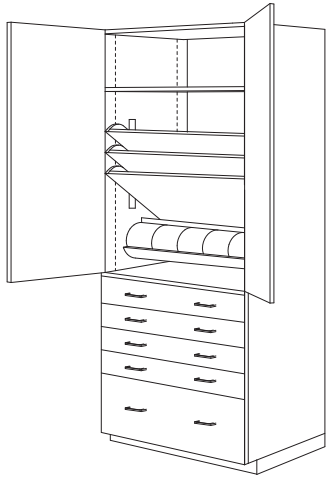
A

## CASEWORK DESIGN SERIES (CDS)

(Page 14 of 20)

### 500 SERIES - WARDROBE CABINETS

(continued)

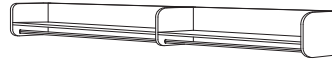


**534**

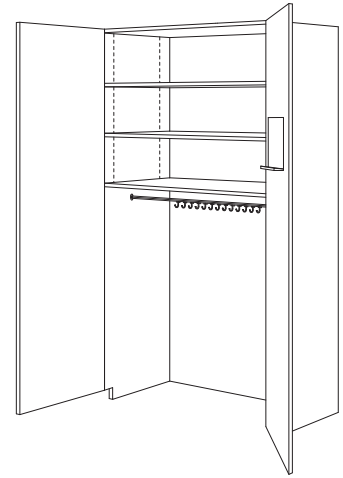
See General Notes



**540**



**541**



**552**

Pole w/ Wall Hooks

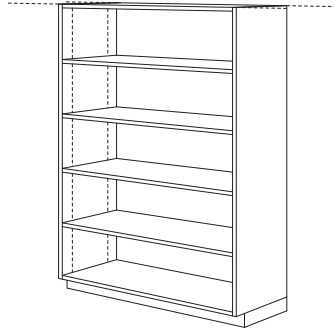
# CASEWORK DESIGN SERIES (CDS)

(Page 15 of 20)

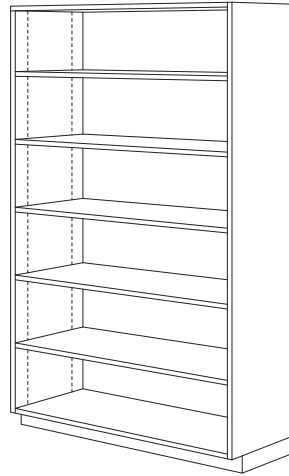
## 600 SERIES - LIBRARY CABINETS



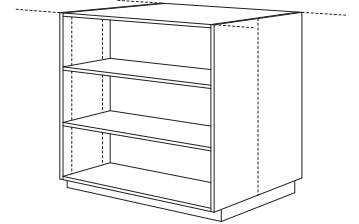
**600**  
605 w/o Back



**601**  
606 w/o Back



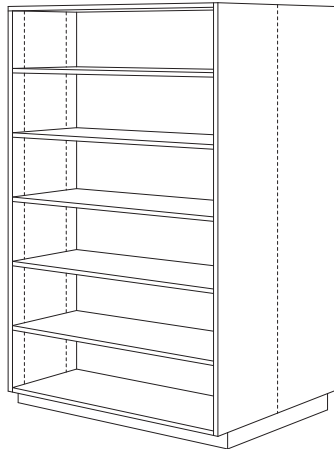
**602**  
607 w/o Back



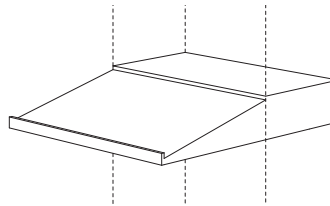
**620**  
625 w/o Back



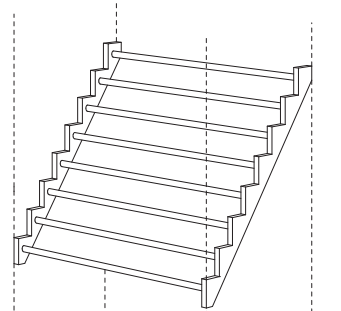
**621**  
626 w/o Back



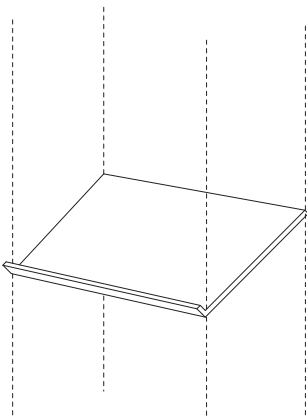
**622**  
627 w/o Back



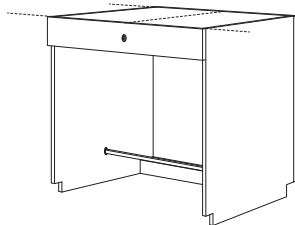
**614**  
Library of Congress Shelf



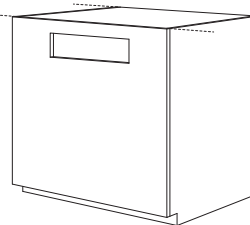
**624**  
Newspaper Rack



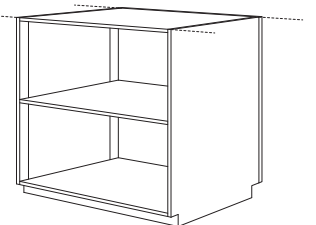
**634**  
Display Shelf



**640**  
Charge Desk



**641**  
Book Return



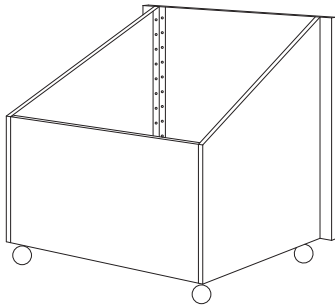
**644**

**A**

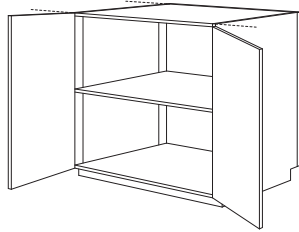
# CASEWORK DESIGN SERIES (CDS)

(Page 16 of 20)

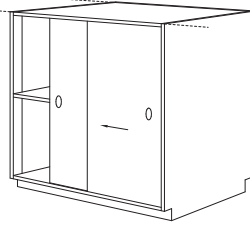
## 600 SERIES - LIBRARY CABINETS (continued)



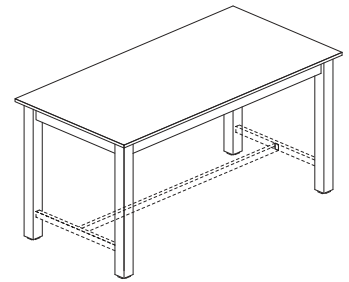
**651**  
Book Cart



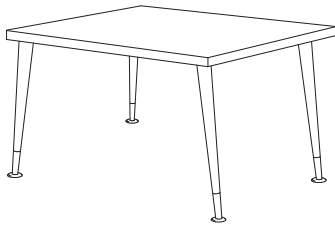
**654**



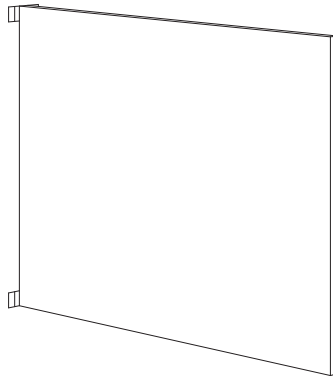
**664**



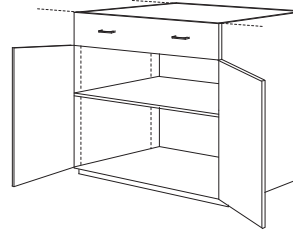
**671a**  
671b w/ Lateral Bracing



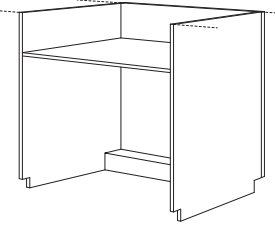
**672**



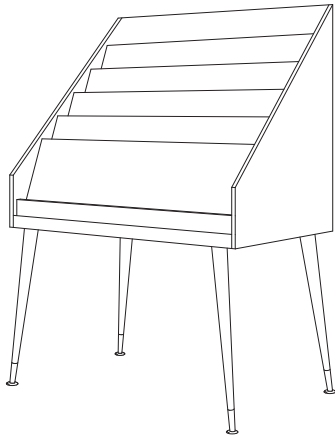
**673**  
Gate



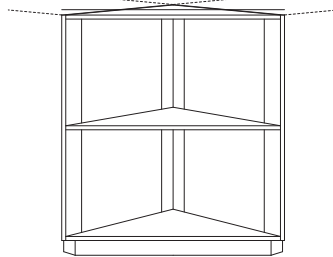
**674**



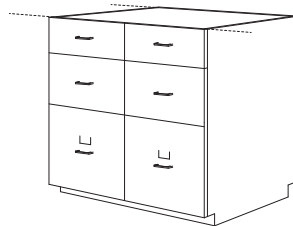
**681**



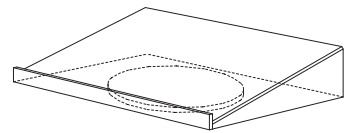
**682 / 692**  
Magazine Rack



**683**



**684**

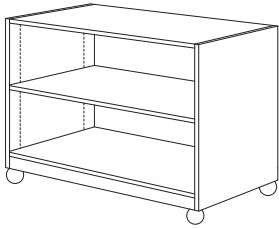


**693**  
Dictionary Stand

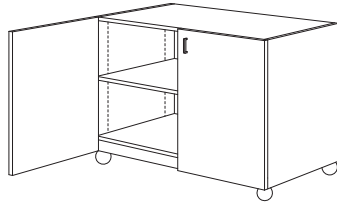
# CASEWORK DESIGN SERIES (CDS)

(Page 17 of 20)

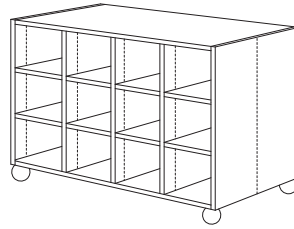
## 700 SERIES - MOVEABLE CABINETS



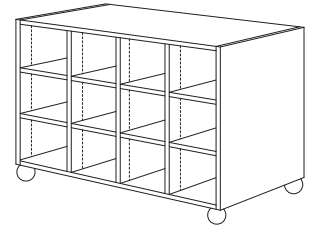
700



702



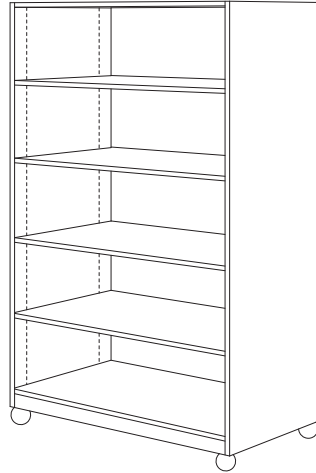
703



704



707



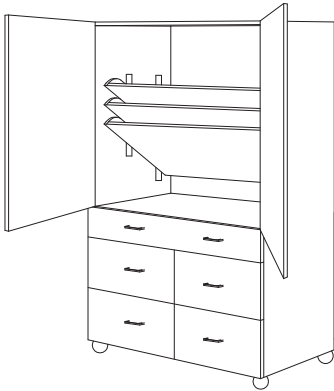
710



712

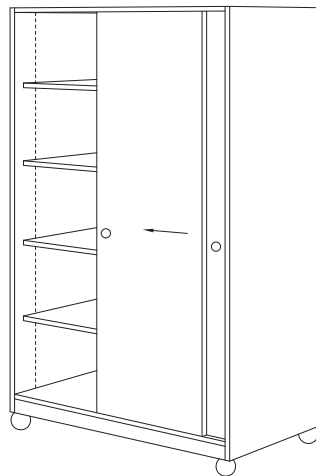


714

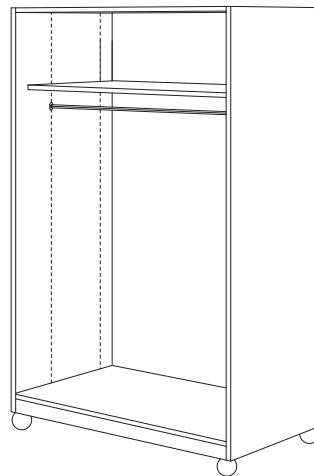


715

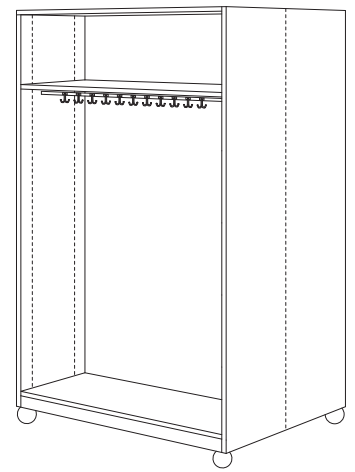
Slide-Out Tilting Paper Shelves



716



720



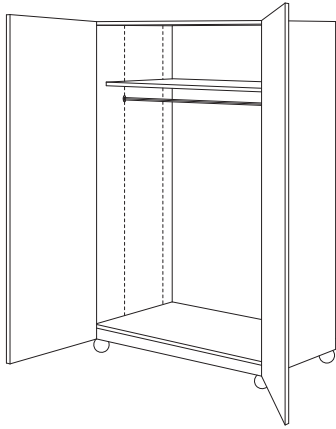
721

# CASEWORK DESIGN SERIES (CDS)

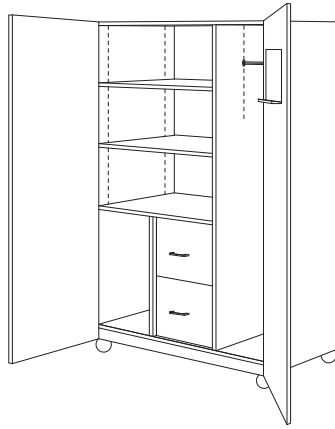
(Page 18 of 20)

## 700 SERIES - MOVEABLE CABINETS

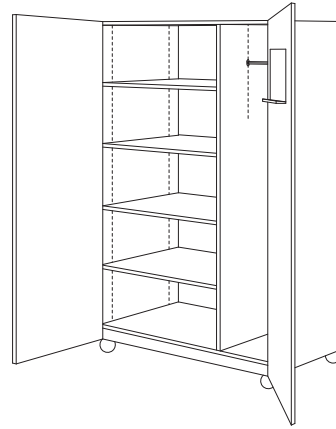
(continued)



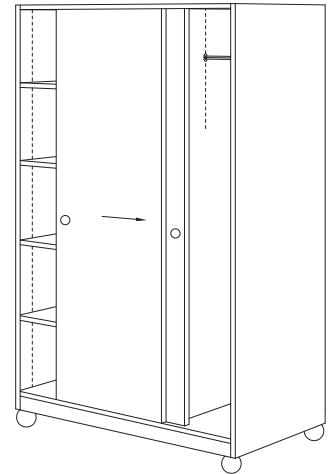
722



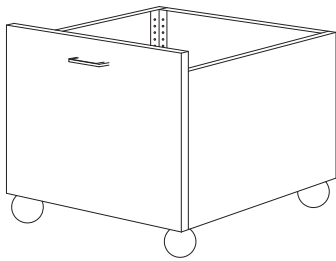
724



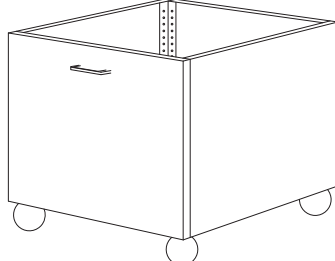
725



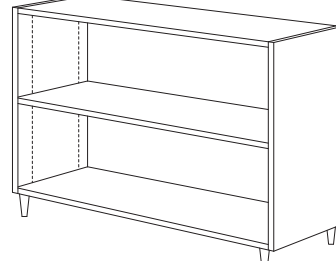
726



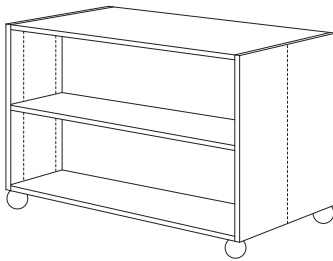
728  
Toy Cart



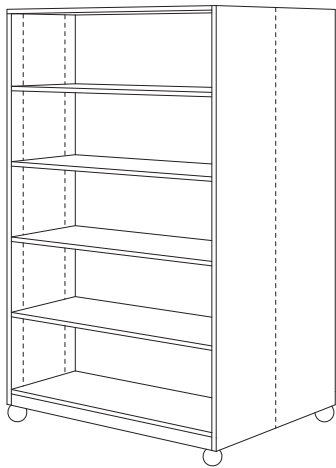
729  
Toy Cart



730



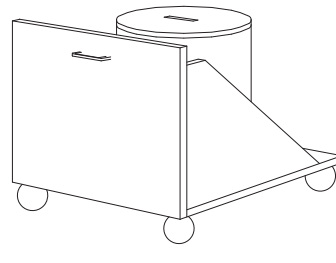
731



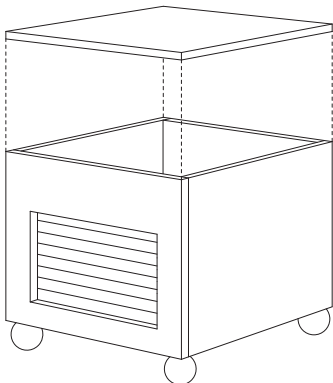
732



734



735  
Clay Cart, Tin NIC

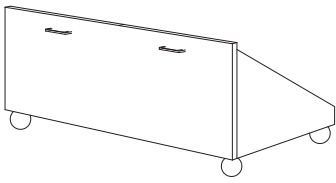


736  
Metal-Lined Clay Cart

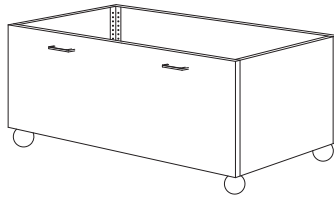
# CASEWORK DESIGN SERIES (CDS)

(Page 19 of 20)

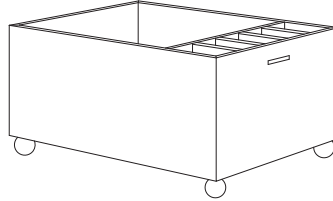
## 700 SERIES - MOVEABLE CABINETS (continued)



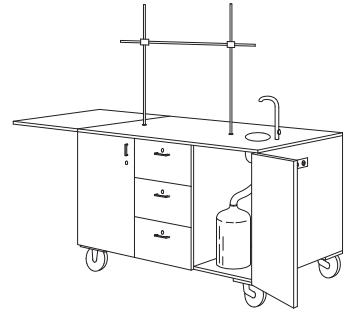
**737**  
Block Cart



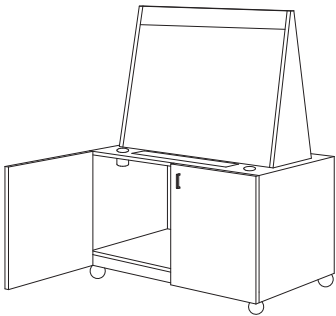
**738**  
Block Cart



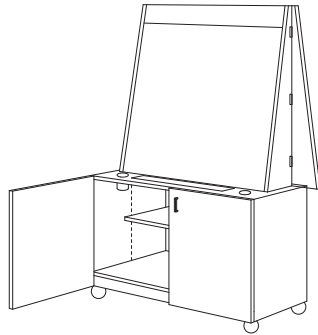
**739**  
Ball & Bat Cart



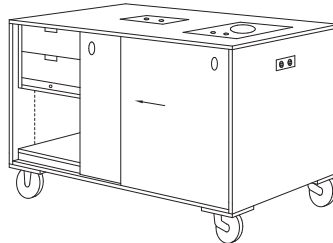
**742**  
Lab Demonstration Cart



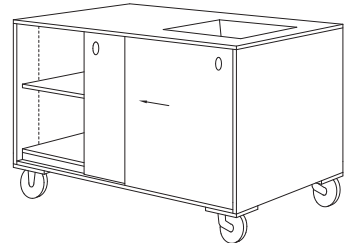
**743**  
Two-Sided Easel



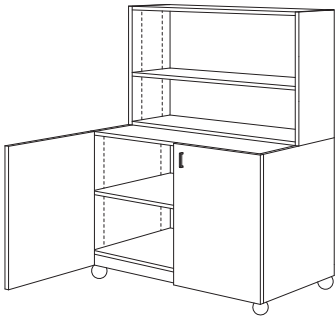
**744**  
Single-Sided Easel



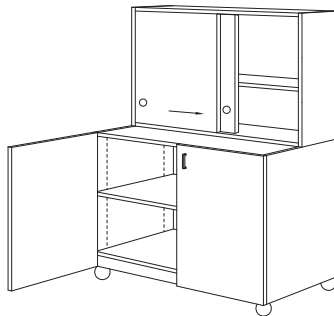
**746**  
Cooking Demonstration Cart



**747**  
Nature Demonstration Cart



**750**



**751**



**752**



**753**

# CASEWORK DESIGN SERIES (CDS)

(Page 20 of 20)

## 700 SERIES - MOVEABLE CABINETS

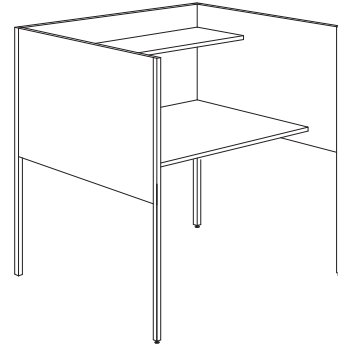
(continued)



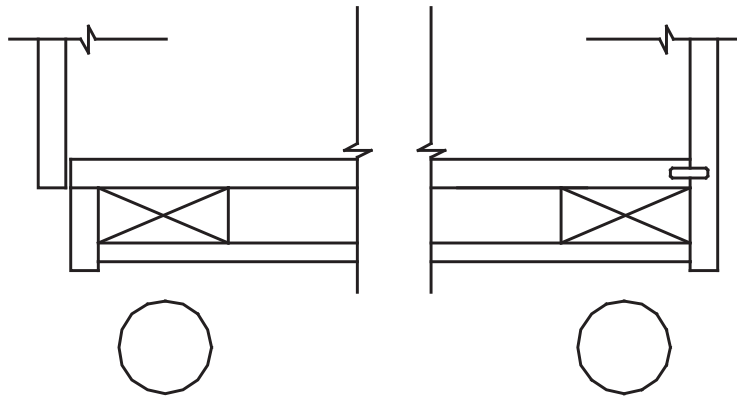
754



755



760  
Study Carrel



Typical Diaphragm Bottom Detail