

10 - Casework

DETAIL NOMENCLATURE

Familiarity with the labeled details on this page will facilitate communication between architects, designers, specifiers, and woodwork manufacturers by establishing common technical language.

Spline Joint: Used to strengthen and align faces when gluing panels in width or length, including items requiring site assembly.

Stub Tenon: Joinery method for assembling stile and rail type frames that are additionally supported, such as web or skeleton case frames.

Haunch Mortise and Tenon Joint: Joinery method for assembling paneled doors or stile and rail type paneling.

Conventional Mortise and Tenon Joint: Joinery method for assembling square-edged surfaces such as case face frames.

Dowel Joint: Alternative joinery method serving same function as Conventional Mortise and Tenon.

French Dovetail Joint: Method for joining drawer sides to fronts when fronts conceal metal extension slides or overlay the case faces.

Conventional Dovetail Joint: Traditional method for joining drawer sides to fronts or backs. Usually limited to flush or lipped type drawers.

Drawer Lock-Joint: Another joinery method for joining drawer sides to fronts. Usually used for flush type installation, but can be adapted to lip or overlay type drawers.

Exposed End Details: Illustrates attachment of finished end of case body to front frame using a butt joint and a lock mitered joint.

Through Dado: Conventional joint used for assembly of case body members. Dado not concealed by application of case face frame.

Blind Dado: Variation of Through Dado with applied edge "stopping" or concealing dado groove.

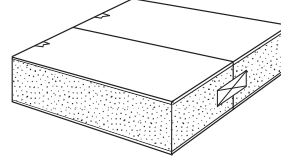
Stop Dado: Another method of concealing dado exposure. Applicable when veneer edging or solid lumber is used. Exposed End Detail illustrates attachment of finished end of case body to front frame using butt joint.

Dowel Joint: Fast becoming an industry standard assembly method, this versatile joinery technique is often based on 1-14" (32 mm) spacing of dowels.

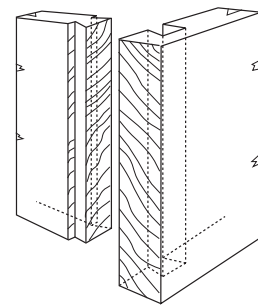
Edge Banding: Method of concealing plies or inner cores of plywood or particleboard when edges are exposed. Thickness or configuration will vary with manufacturers' practices.

Paneled Door Details: Joinery techniques when paneled effect is desired. Profiles are optional as is the use of flat or raised panels. Solid lumber raised panels may be used when width does not exceed the standard. Rim-raised panels recommended for Premium Grade or when widths exceed the AWS or when transparent finish is used.

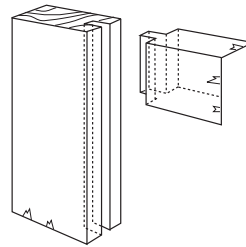
Spline Joint



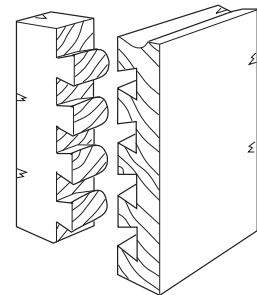
French Dovetail Joint



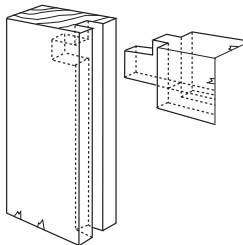
Stub Tenon



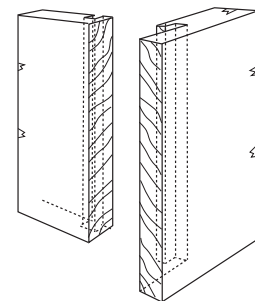
Conventional Dovetail Joint



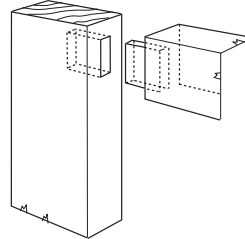
Haunch Mortise and Tenon Joint



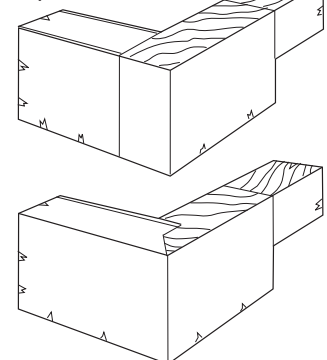
Drawer Lock-Joint



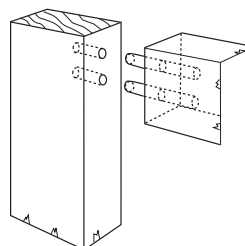
Conventional Mortise and Tenon Joint



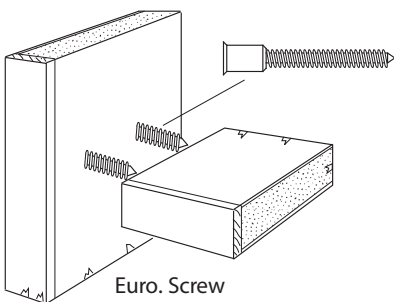
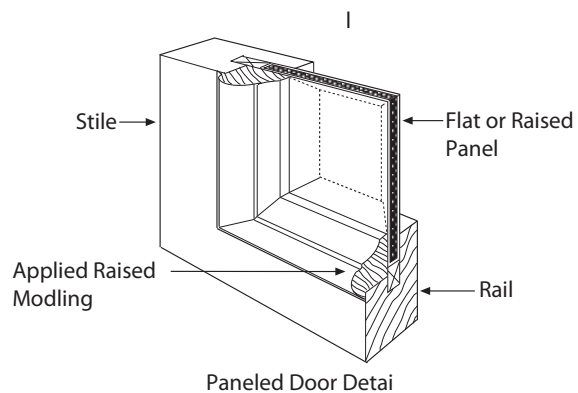
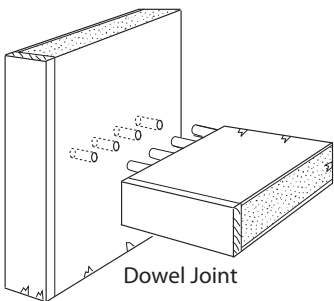
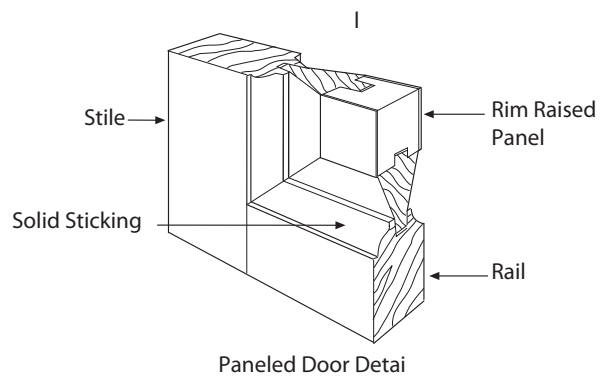
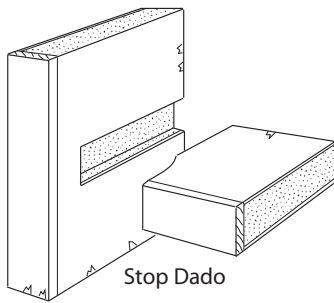
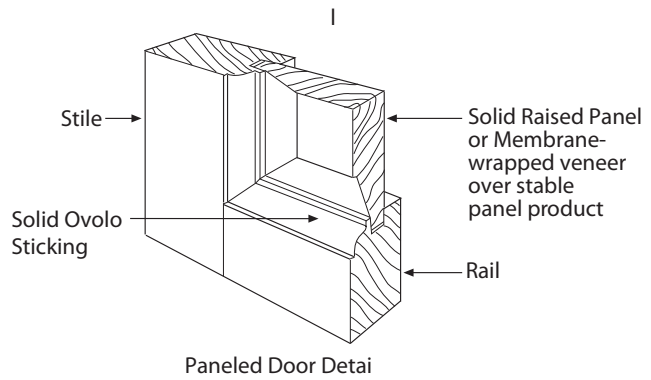
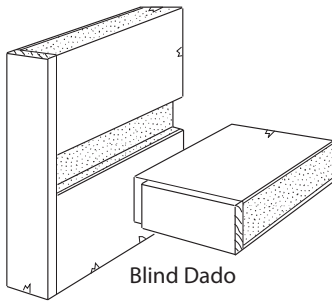
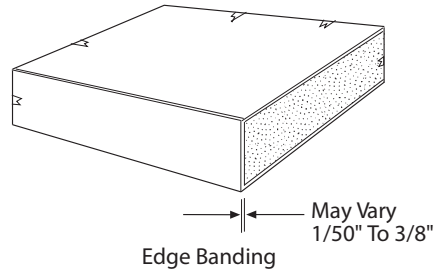
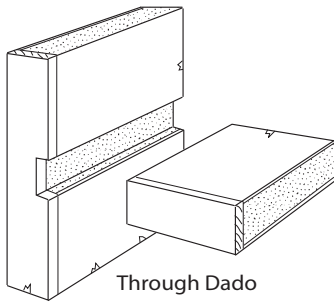
Exposed End Details



Dowel Joint



10 - Casework

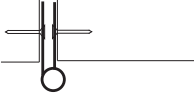
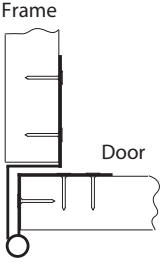
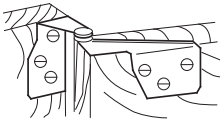
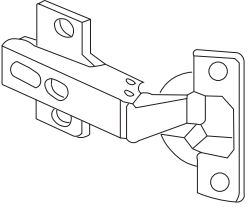


10 - Casework

Hinge Selection Guide

Architectural cabinet hinges will usually be furnished from the manufacturer's stock unless otherwise specified. The four most common hinge types are illustrated below, along with a brief table to assist in selection.

European hinges with the screws set in synthetic inserts are fast becoming industry standard. These hinges have been found to be cost-effective alternatives to the more traditional hinges shown below. Follow hinge manufacturers' recommendations on number and spacing of hinges. There are conditions, however, in which the use of butt or wraparound hinges will continue to be the best solution. Pivot hinges often require a cut-in center hinge. Consult manufacturer's recommendations.

	Butt	Wraparound	Pivot	European Style
Hinge Type				
Applications	Conventional Flush with Face Frame	Conventional Reveal Overlay	Reveal Overlay Flush Overlay	Conventional Flush without Face Frame Reveal Overlay Flush Overlay
Strength	High	Very High	Moderate	Moderate
Concealed when closed	No	No	Semi	Yes
Requires mortising	Yes	Occasionally	Usually	Yes
Cost of hinge	Low	Moderate	Low	Moderate
Ease of installation	Moderate	Easy	Moderate	Very Easy
Easily adjusted after installation	No	No	No	Yes
Remarks	Door requires hardwood edge	Exposed knuckle and hinge body	Door requires hardwood edge	1. Specify degree of opening 2. No catch required on self-closing styles

10 - Casework

Drawer Slide Selection Guide

The following table serves as both a checklist and a starting point for the discussion of a wide variety of drawer slide systems. While by no means exhaustive, the characteristics described below are often considered the most important by the client, the design professional, and the woodwork manufacturer. The selection of the slide characteristics will affect the usefulness of the cabinets. Careful consideration should be given to avoid “over-specifying” for the purpose intended.

The owner and the design professional will be wise to involve a manufacturer in the design and selection process early in the project. Dimensions use the inch-pound convention.

Degree of Extension	<input type="checkbox"/> STANDARD EXTENSION—All but 4-6" of drawer body extends out of cabinet <input type="checkbox"/> FULL EXTENSION—Entire drawer body extends out to face of cabinet <input type="checkbox"/> FULL EXTENSION WITH OVERTRAVEL—Entire drawer body extends beyond the face of cabinet
Static Load Capacity	<input type="checkbox"/> 50 Pounds—Residential/Light Commercial <input type="checkbox"/> 75 Pounds—Commercial <input type="checkbox"/> 100 Pounds—Heavy Duty <input type="checkbox"/> Over 100 Pounds—Special Conditions, Extra Heavy Duty
Dynamic Load Capacity	<input type="checkbox"/> 30 Pounds; 35,000 cycles—Residential/Light Commercial <input type="checkbox"/> 50 Pounds; 50,000 cycles—Commercial <input type="checkbox"/> 75 Pounds; 100,000 cycles—Heavy Duty
Removal Stop	<input type="checkbox"/> INTEGRAL STOP—Requires ten times the normal opening force to remove drawer <input type="checkbox"/> POSITIVE STOP—Latch(es) which must be operated/opened to remove drawer
Closing	<input type="checkbox"/> SELF CLOSING/STAY CLOSED—Drawer slides will self-close with their related dynamic load when the drawer is 2" from the fully closed position and not bounce open when properly adjusted
Metal Sided Systems	<p>In recent years several hardware manufacturers have developed “drawer systems” of one type or another, nearly all proprietary. In addition to the above criteria, the following should be considered for these systems prior to approval for use:</p> <input type="checkbox"/> POSITIVE STOP—Drawer must stop within itself and not rely on the drawer front to stop it <input type="checkbox"/> PULLOUT STRENGTH—System must demonstrate sufficient strength of attachment of front to sides - design professional should evaluate and approve individually

10 - Casework

Ideas in Groups

The subdivisions of this Section are an ever-growing collection of design ideas with an additional level of detail. While these ideas are grouped by (admittedly somewhat arbitrary) classifications, the design professional should never hesitate to adopt and adapt from one group to another.

Most importantly, the *Architectural Woodwork Standards* presents these ideas as a *starting point* for creative design and fabrication. They are not intended as an illustration of the only way to accomplish a design solution, nor are they intended to establish firm recommendations on dimensions or fabrication techniques.

NOTE: There are projects, such as credenzas, which benefit from having the grain or pattern carried on to the toe space. Toe kicks with exposure to moisture are often specified to be solid hardwood, with the grain running horizontally. Such special considerations shall be clearly noted on the design drawings and in the specifications. Base/toe on cabinets shall be integral (constructed as an integral part of the cabinet body), or separate (constructed as a separate member), at the option of the manufacturer.

Stile and rail doors and drawer fronts, and face frames on some cabinets, require careful attention to details regarding material selection for compatibility of grain and color as well as grain direction.

When transparent finish is specified for exposed surfaces, semi-exposed surfaces are not required to be transparent finish.

The advice and suggestions of all the members of the construction team, from the customers through the designers through the contractors and subcontractors, can and should be evaluated.

The classifications to follow are:

Schools and Libraries

Banks and Courts

Corporate Woodwork

Furniture and Fixtures

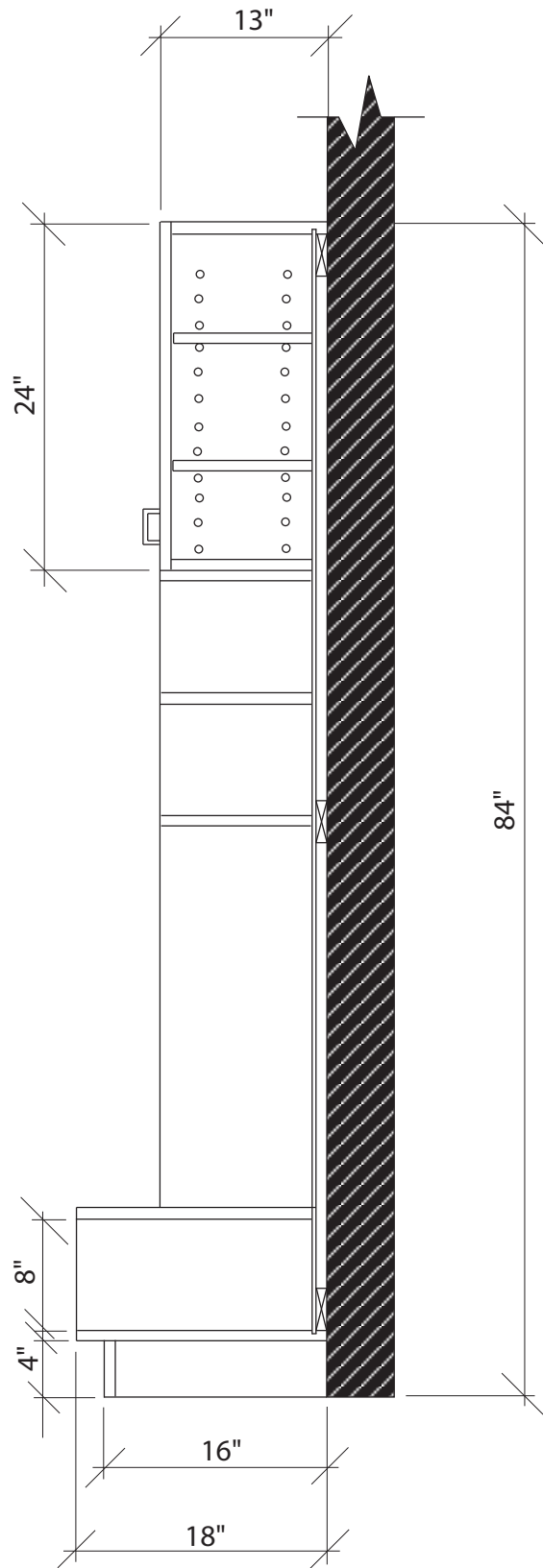
Reception

Church Fittings

Basic Cabinetry

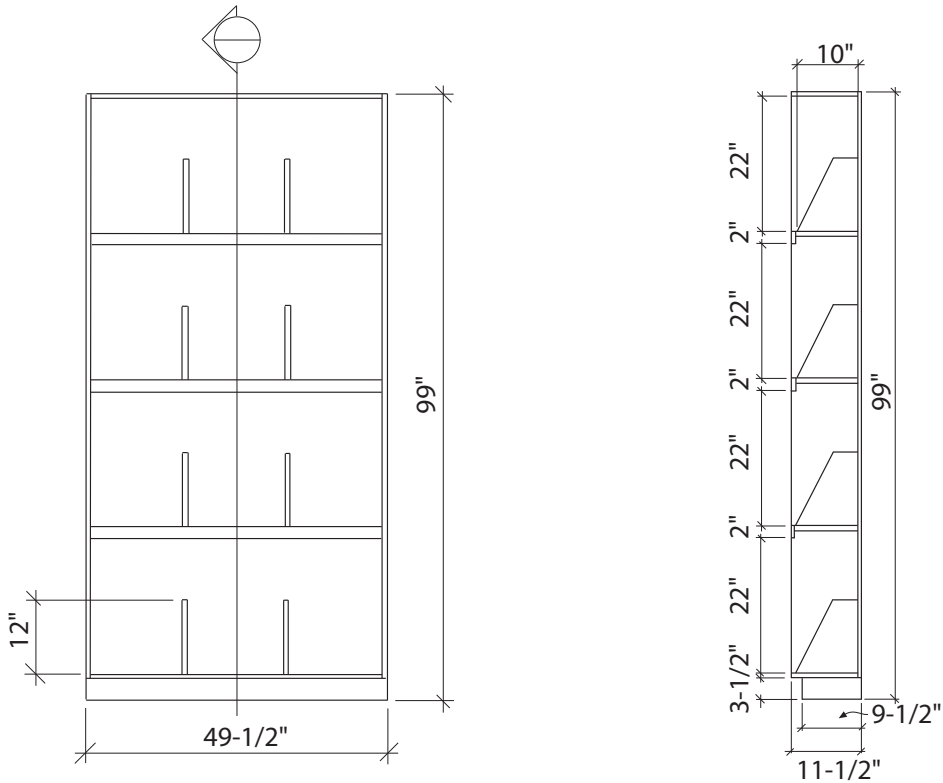
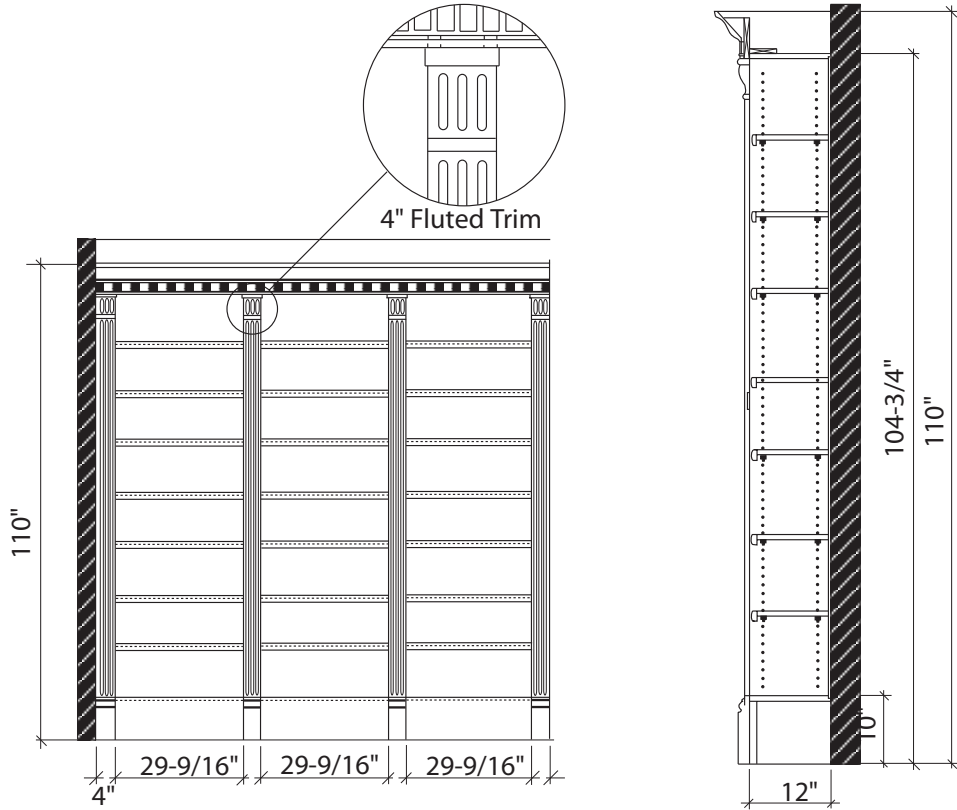
10 - Casework

Schools and Libraries



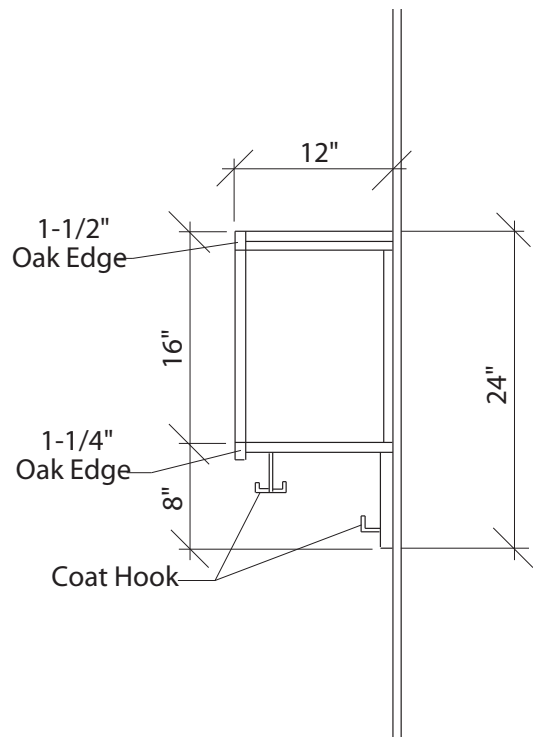
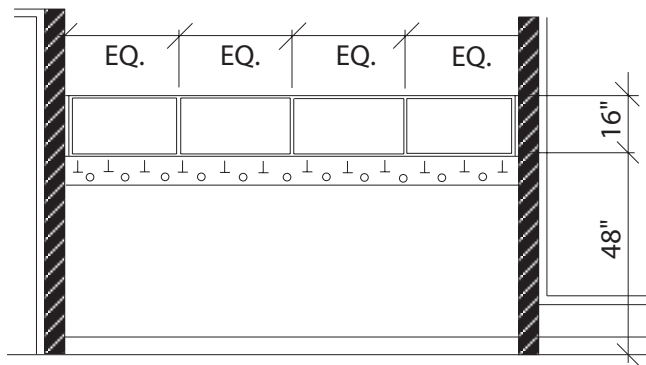
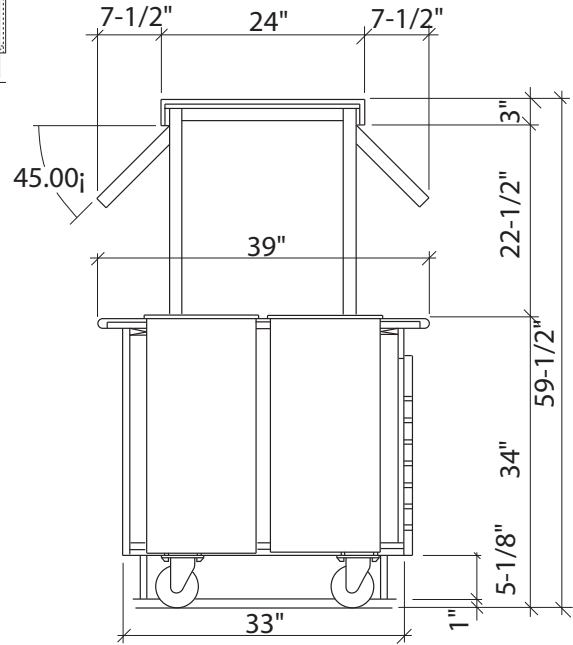
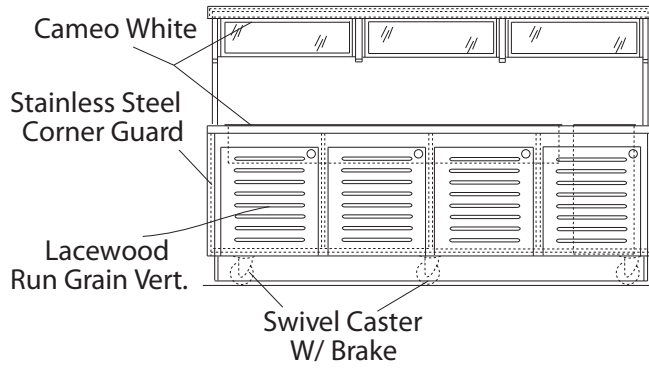
10 - Casework

Schools and Libraries



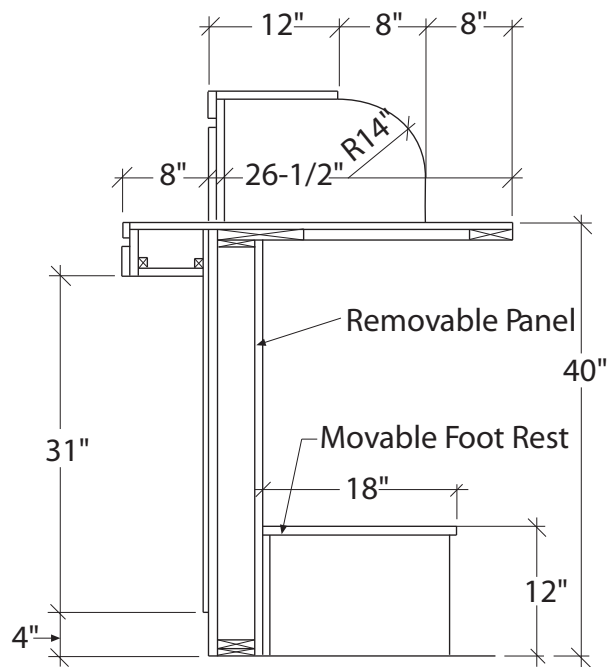
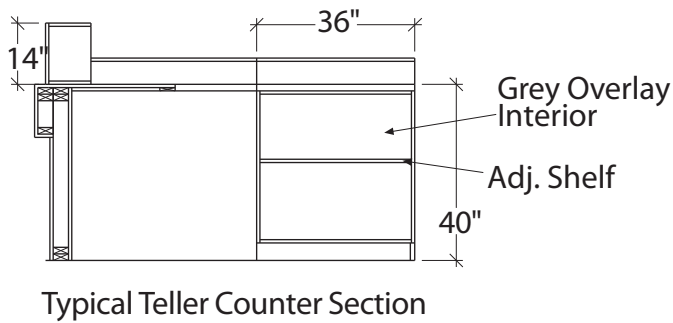
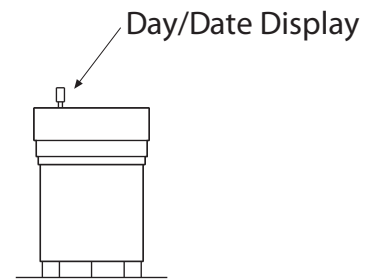
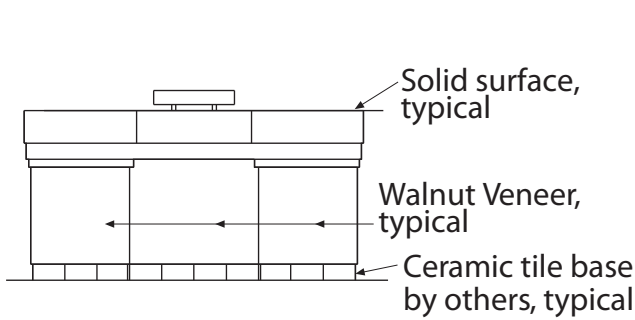
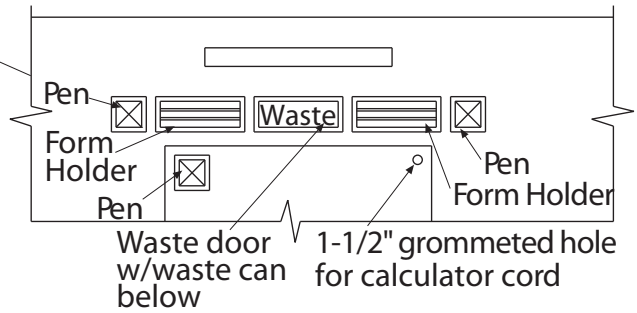
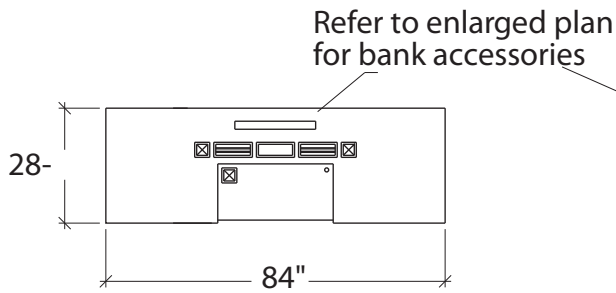
10 - Casework

Schools and Libraries



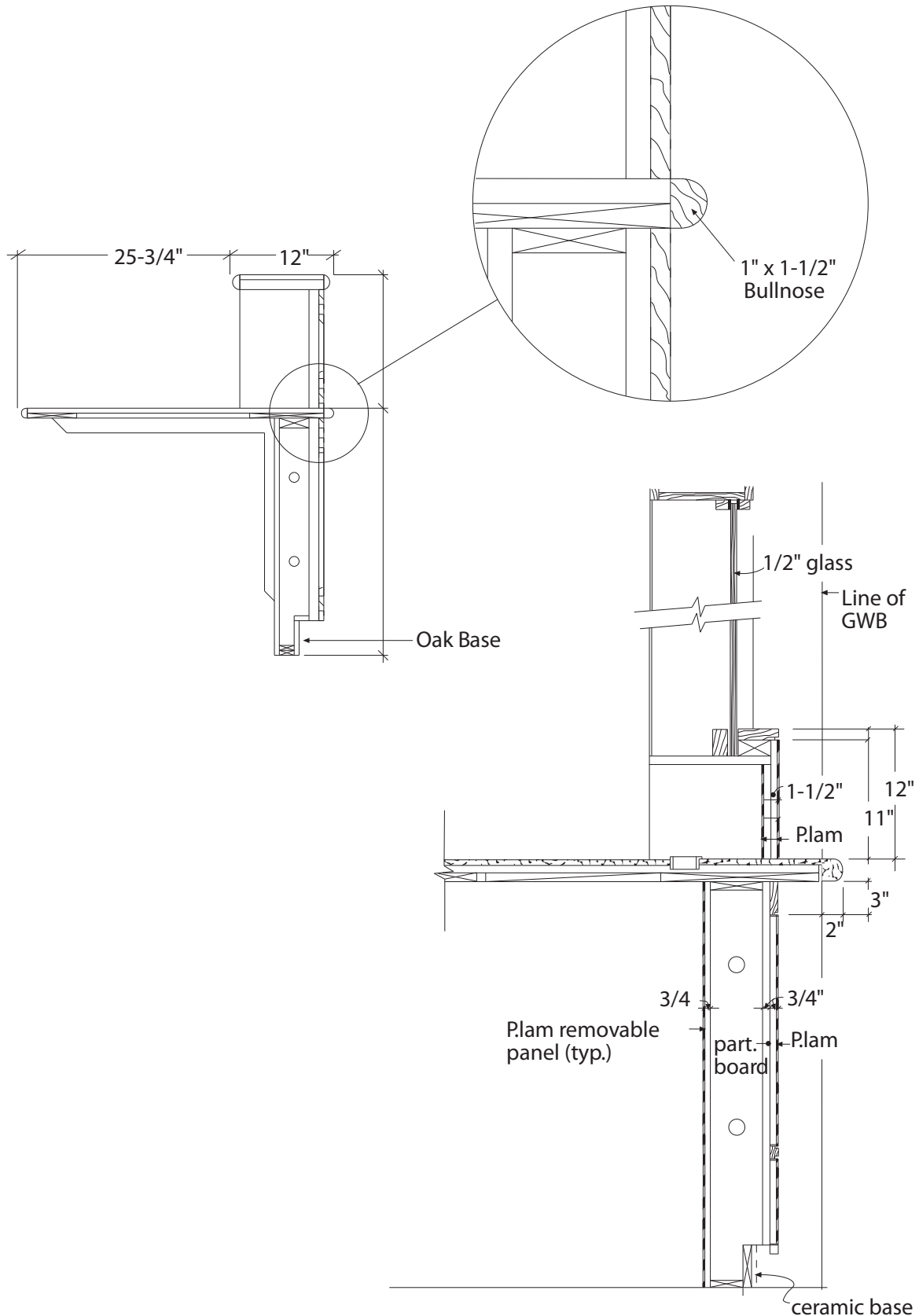
10 - Casework

Banks and Courts



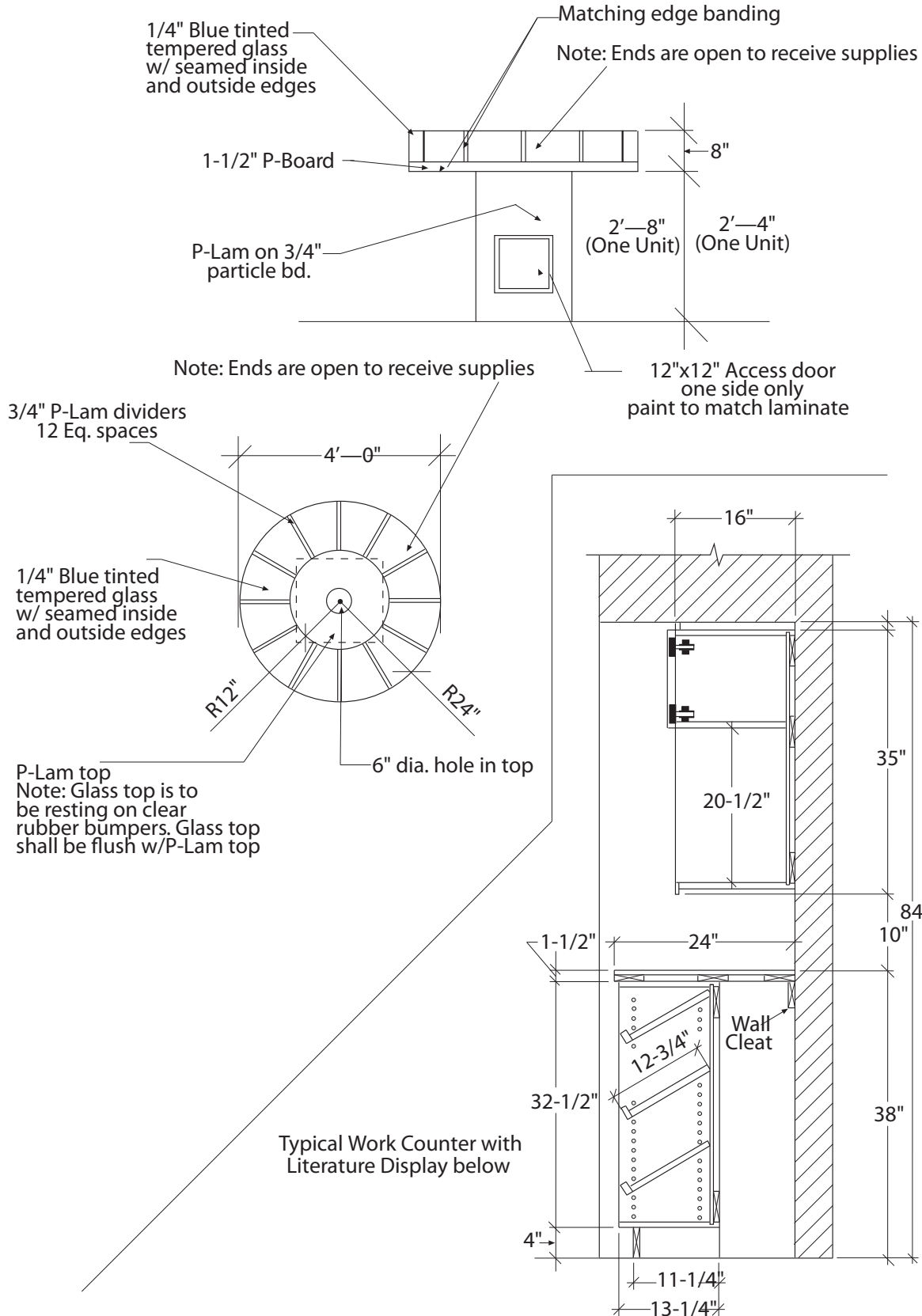
10 - Casework

Banks and Courts



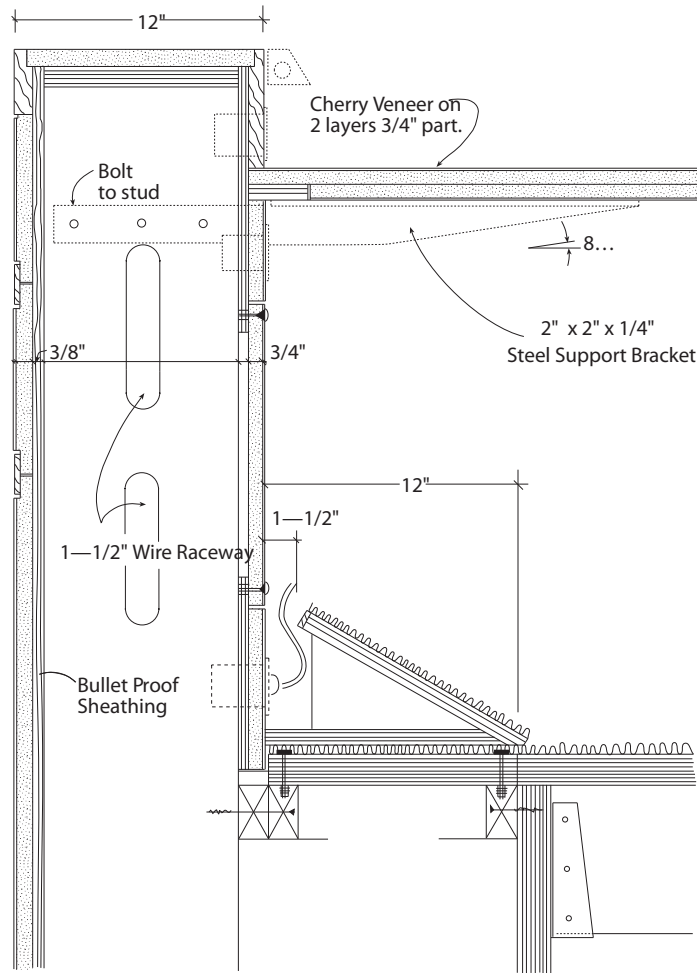
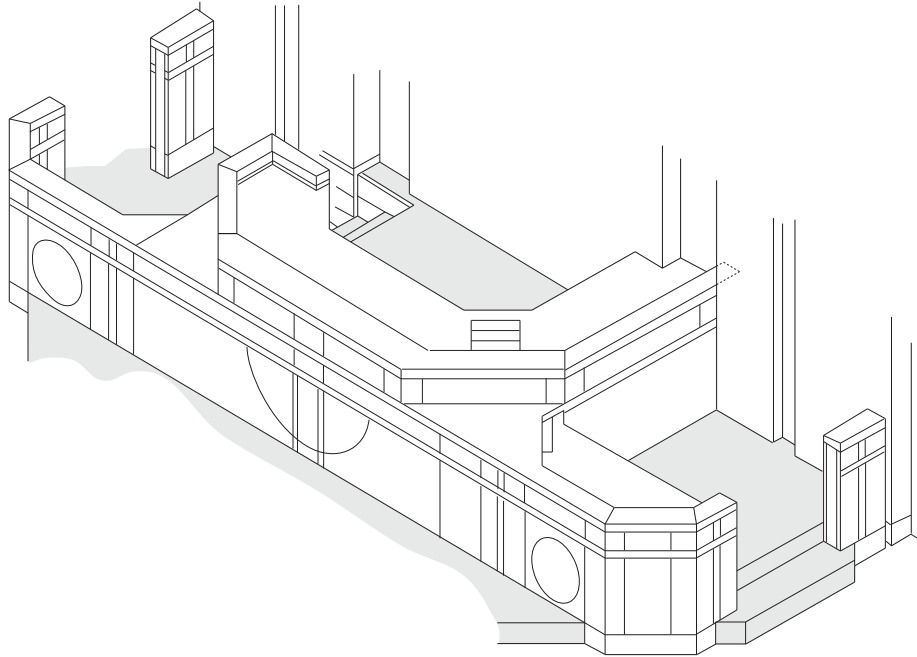
10 - Casework

Banks and Courts



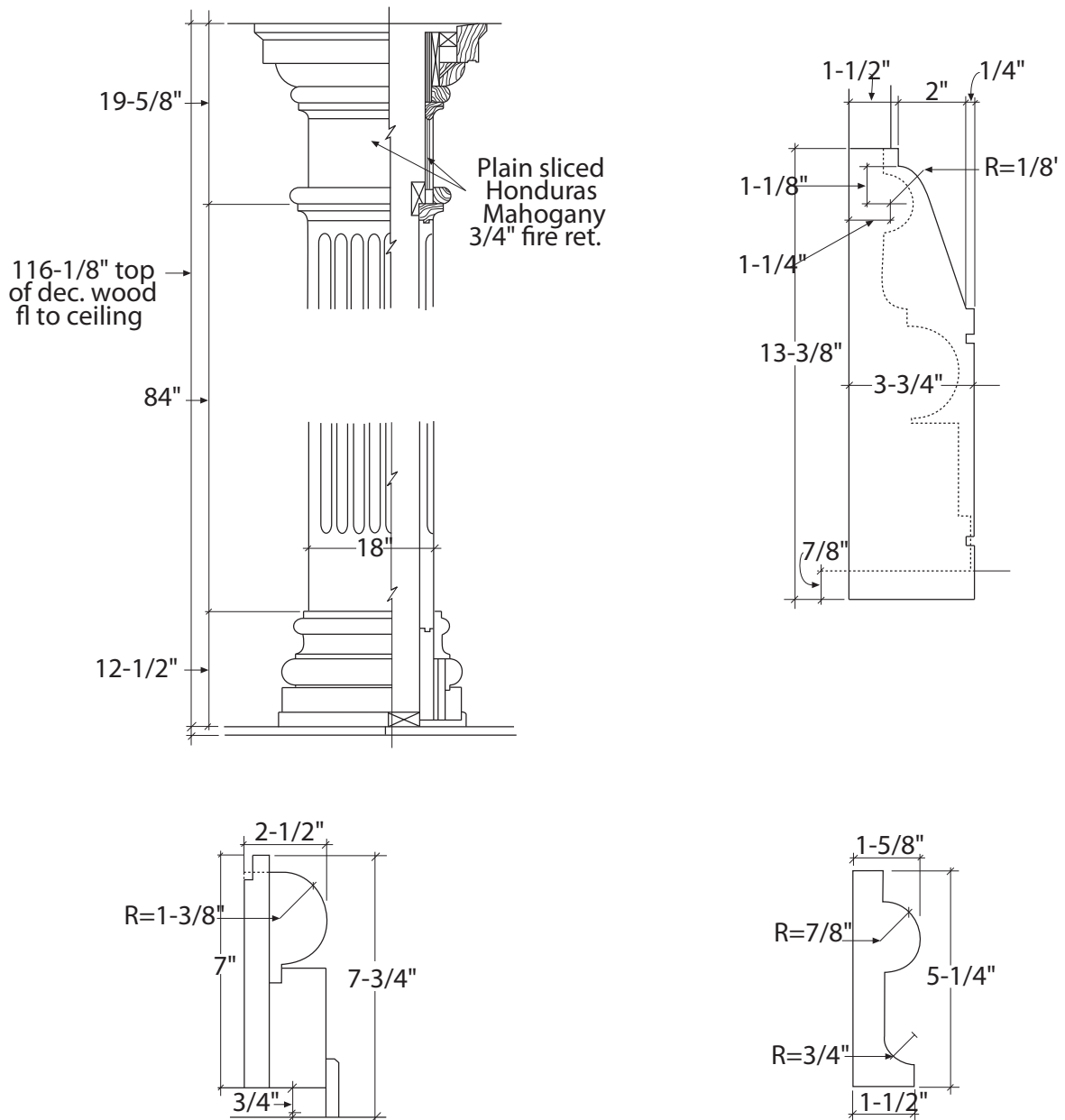
10 - Casework

Judge's Bench



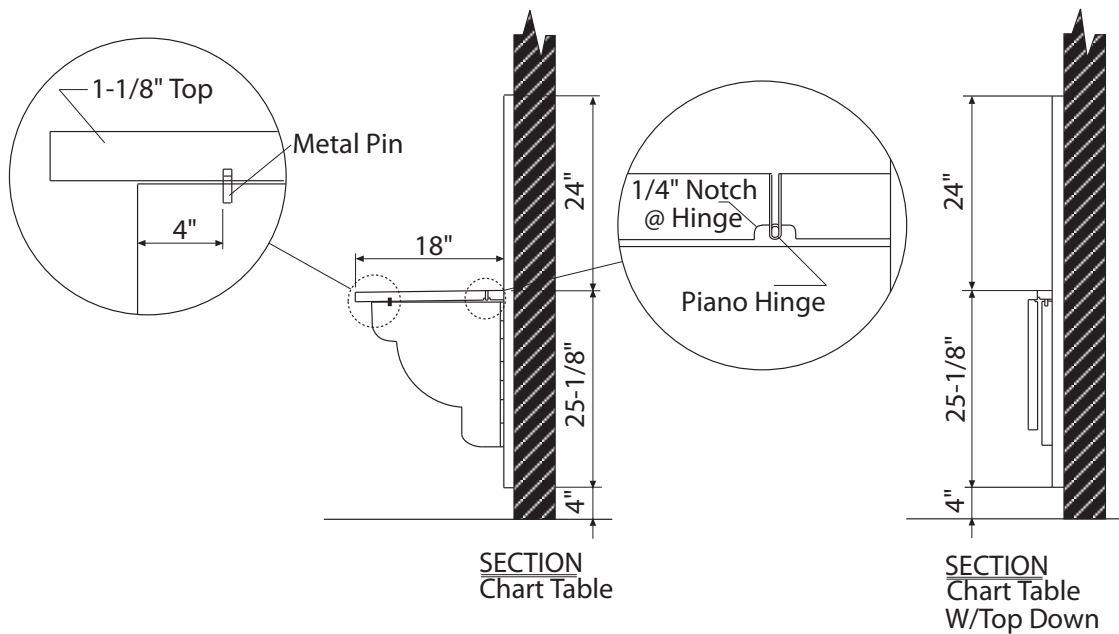
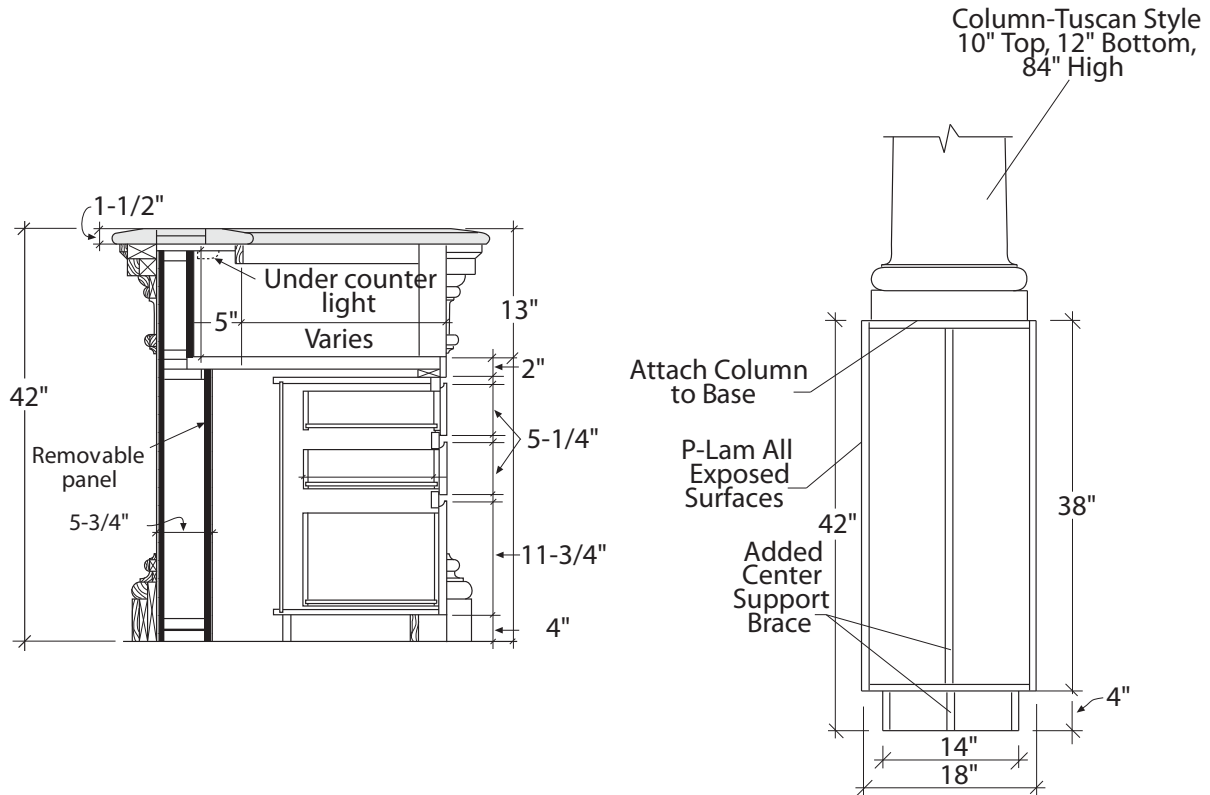
10 - Casework

Corporate Woodwork



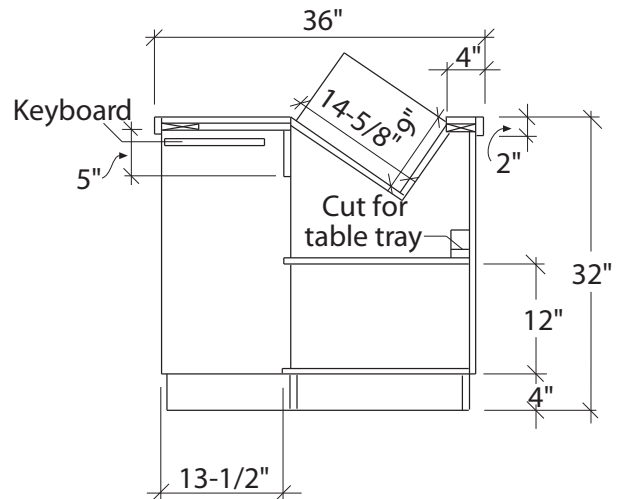
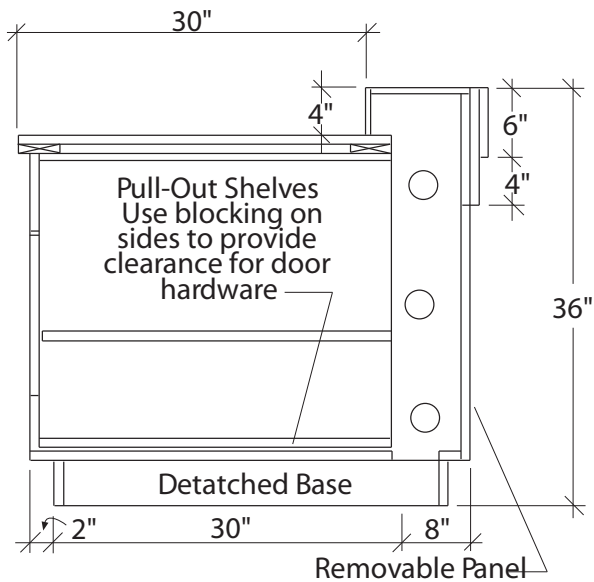
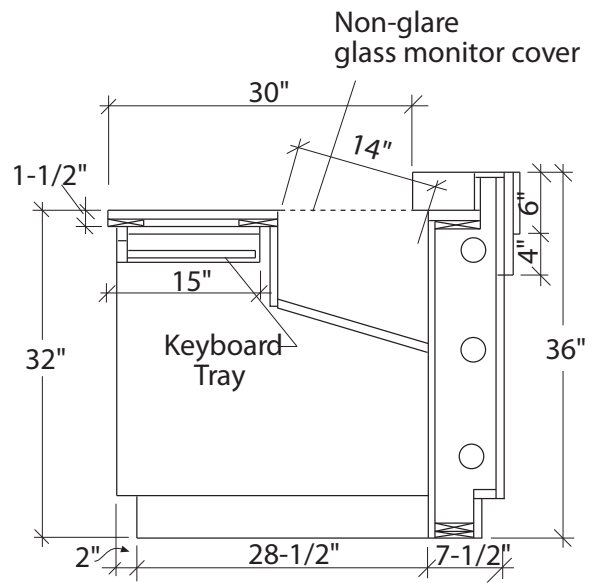
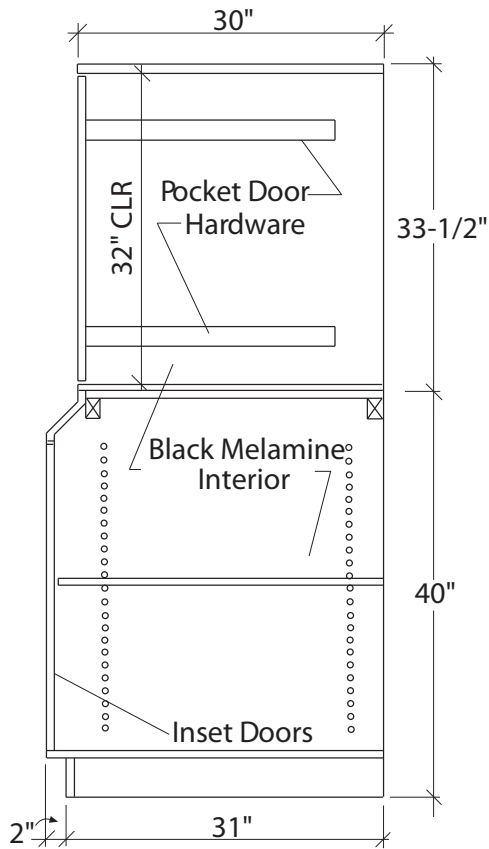
10 - Casework

Corporate Woodwork



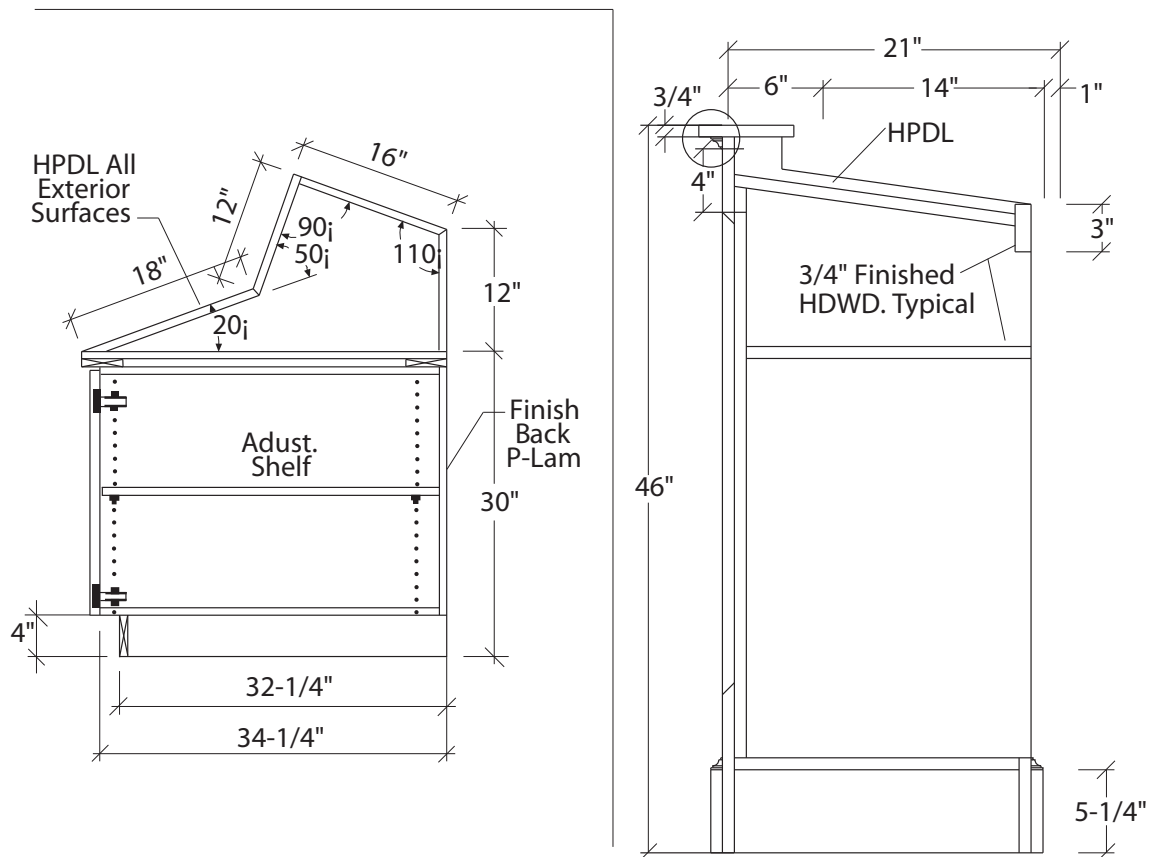
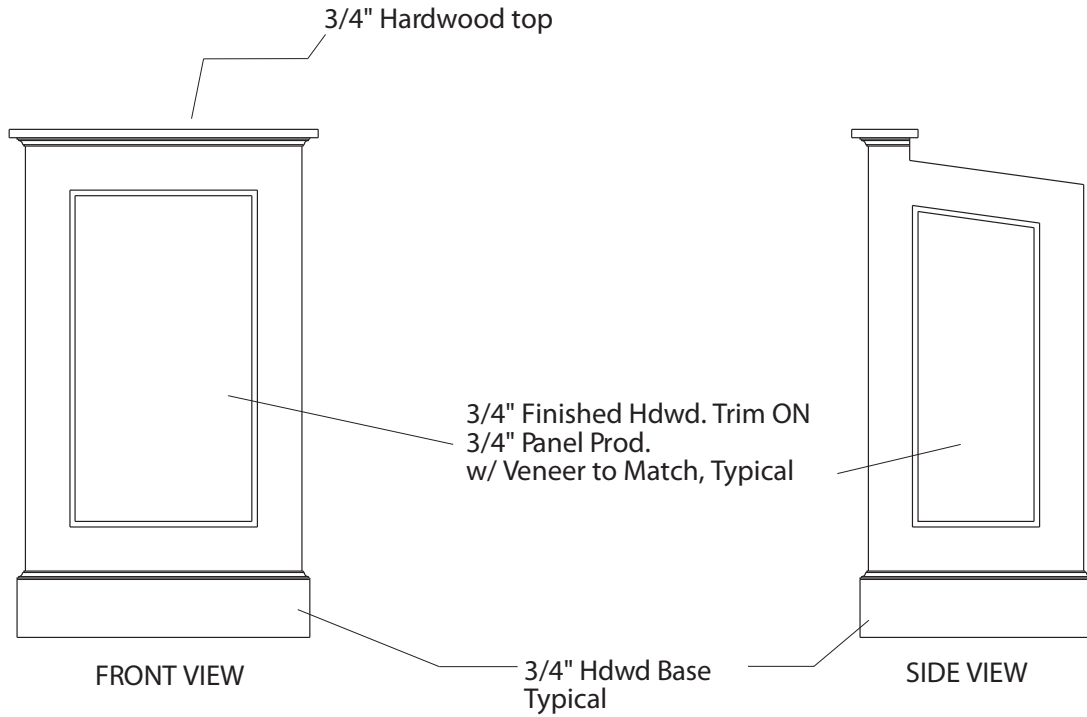
10 - Casework

Corporate Woodwork



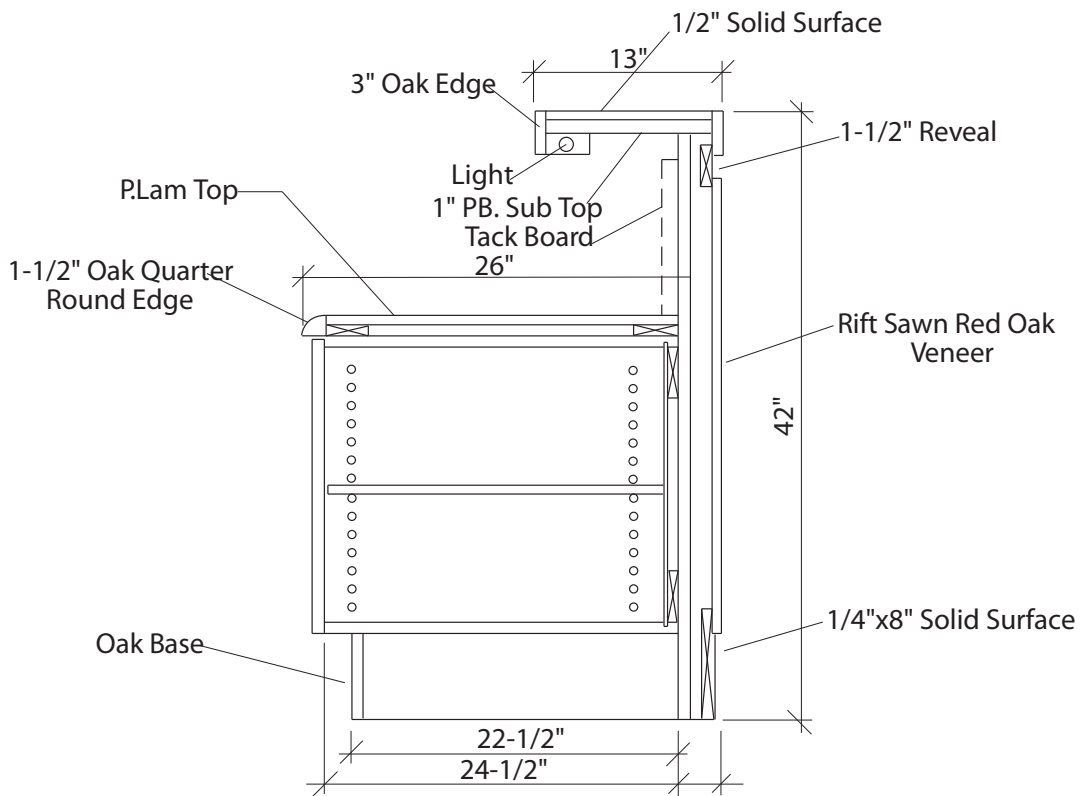
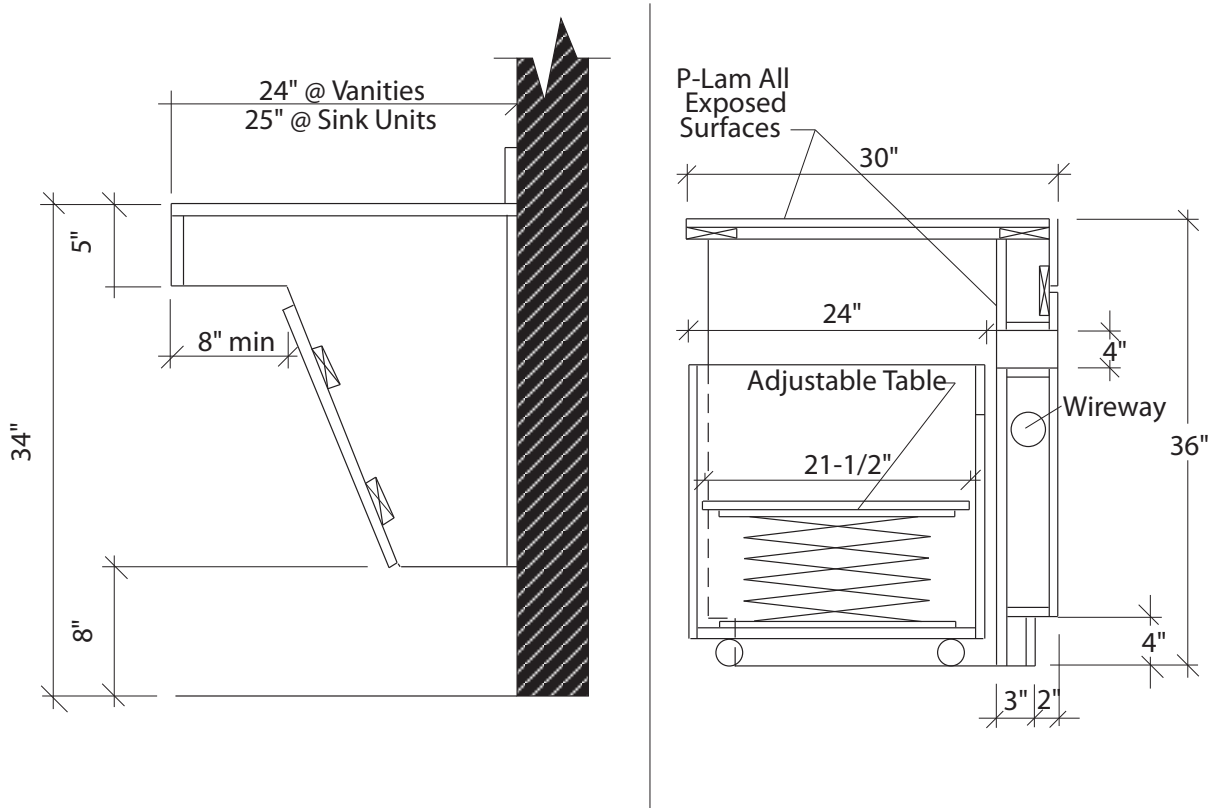
10 - Casework

Corporate Woodwork



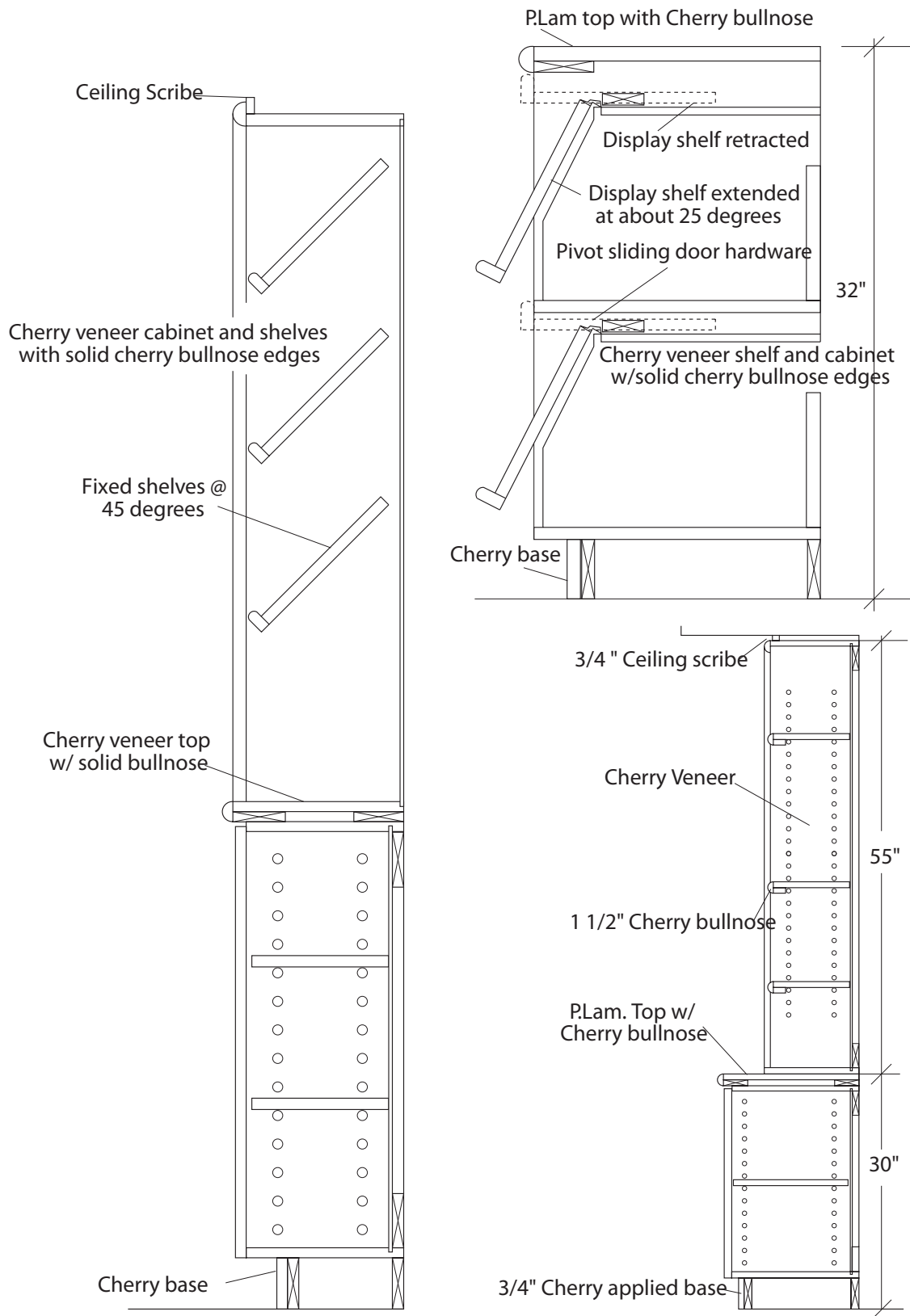
10 - Casework

Corporate Woodwork



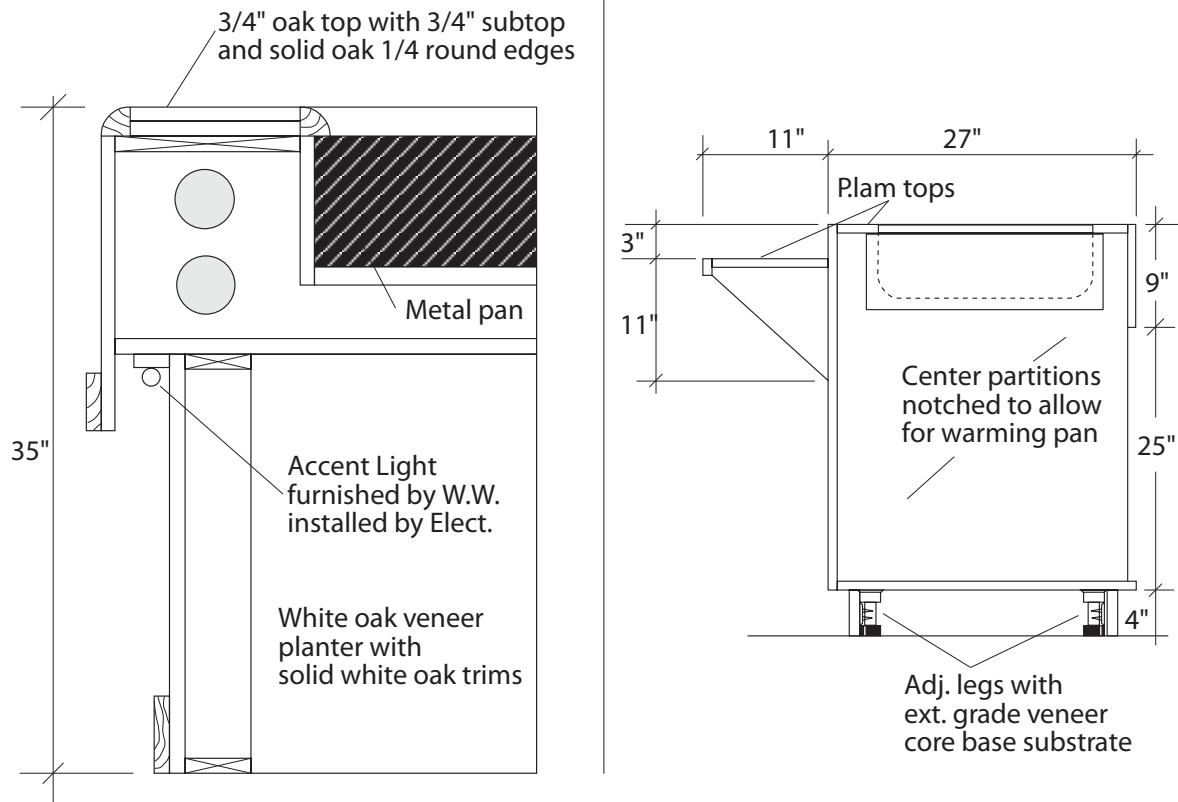
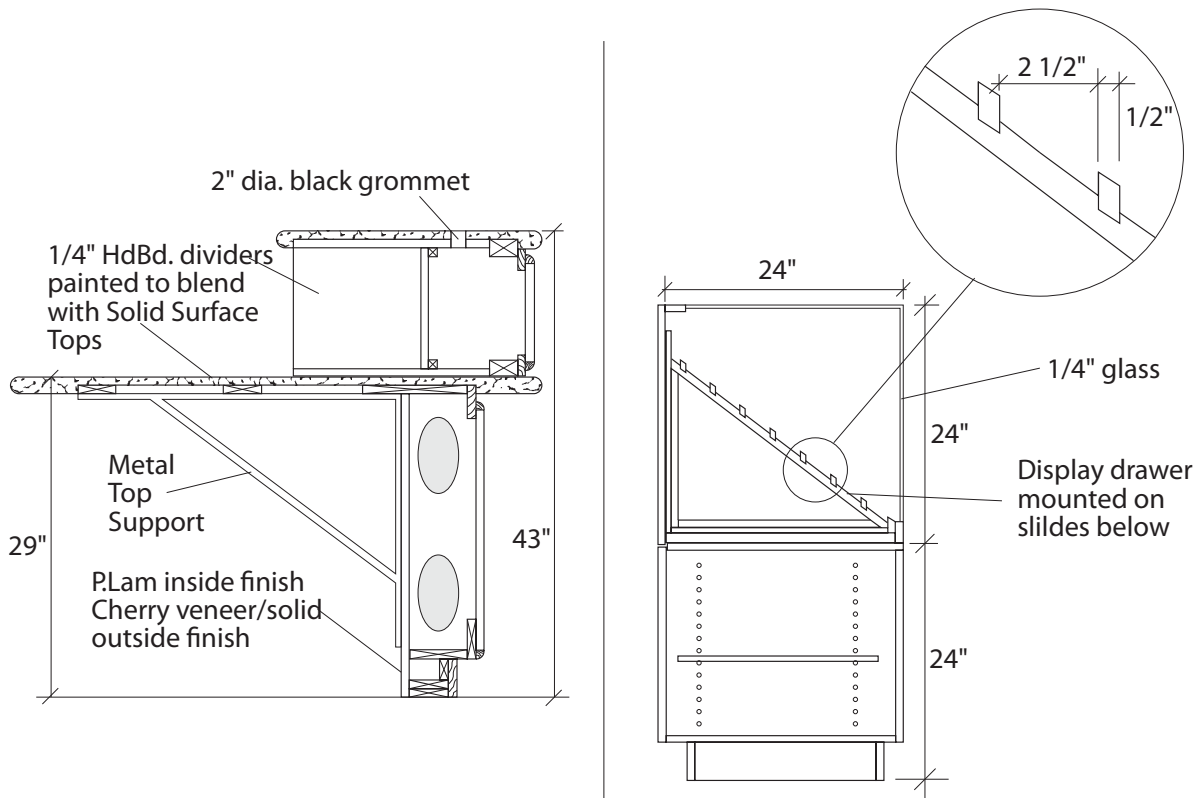
10 - Casework

Furniture and Fixtures



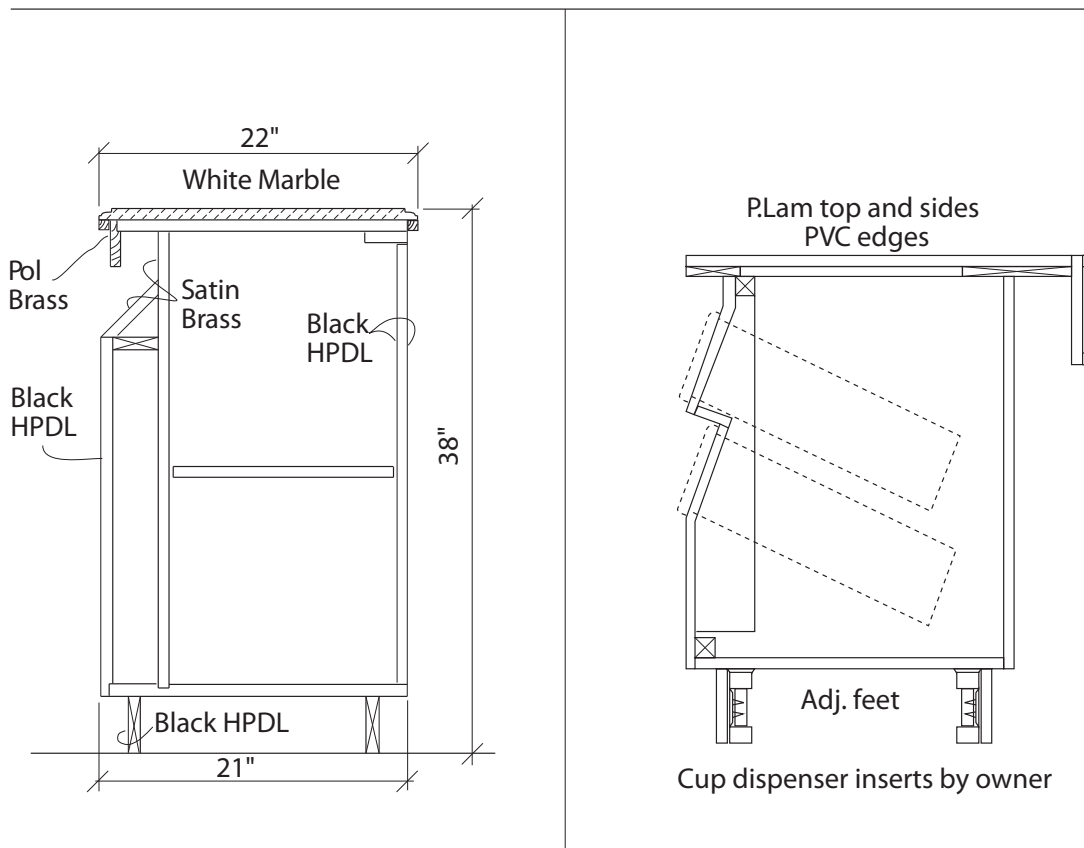
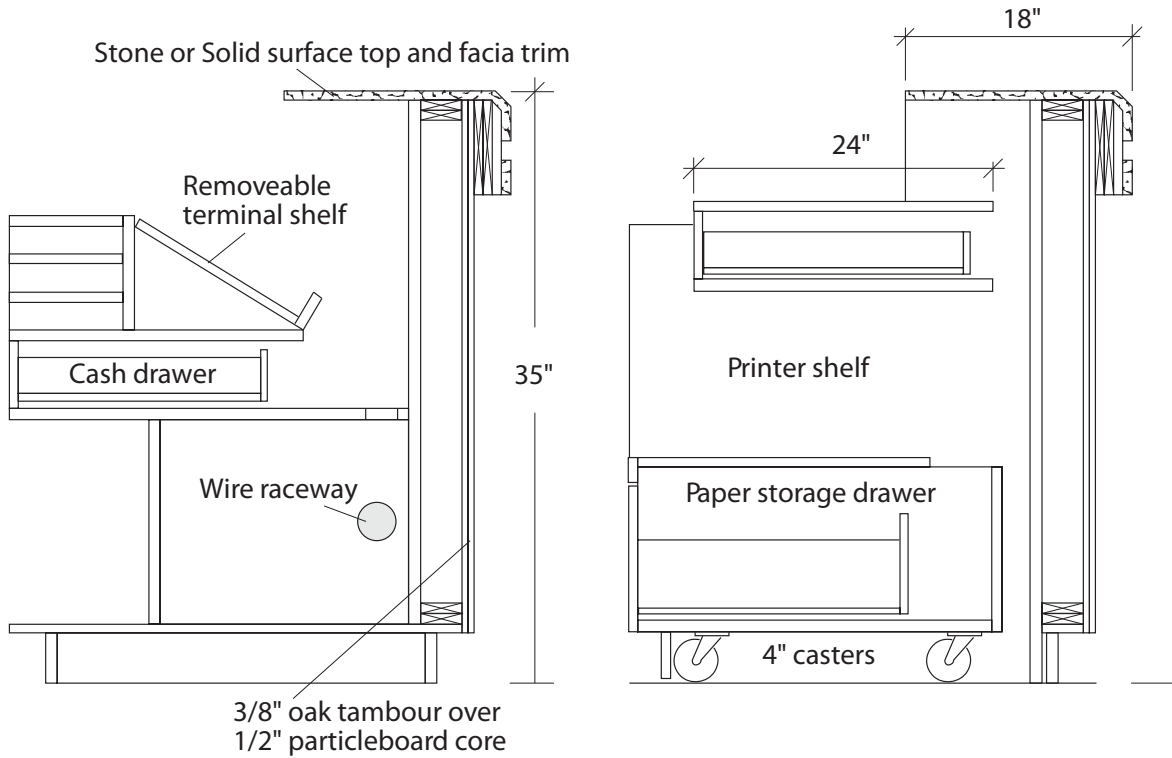
10 - Casework

Furniture and Fixtures



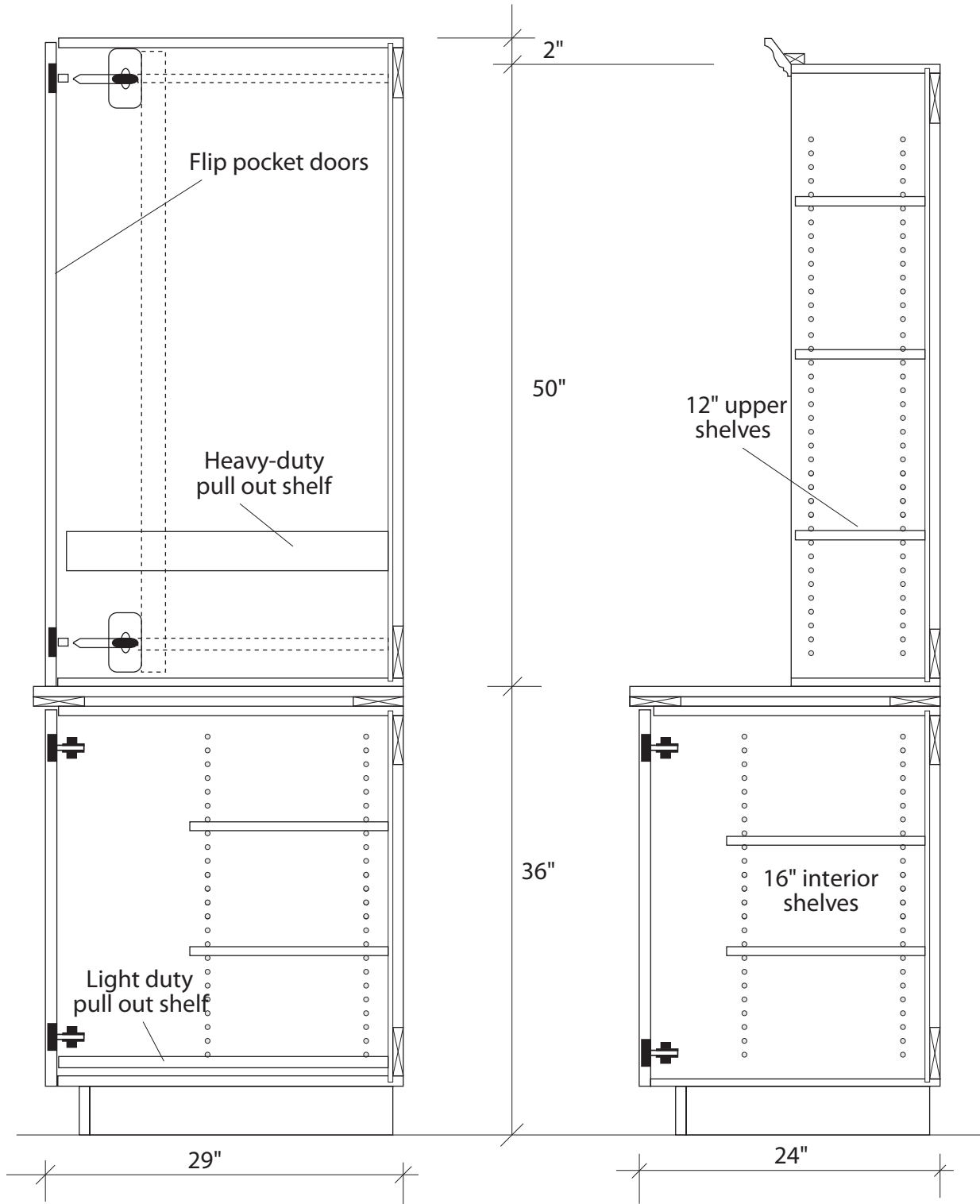
10 - Casework

Furniture and Fixtures



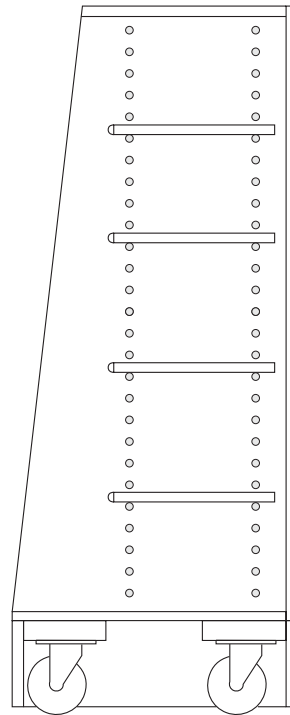
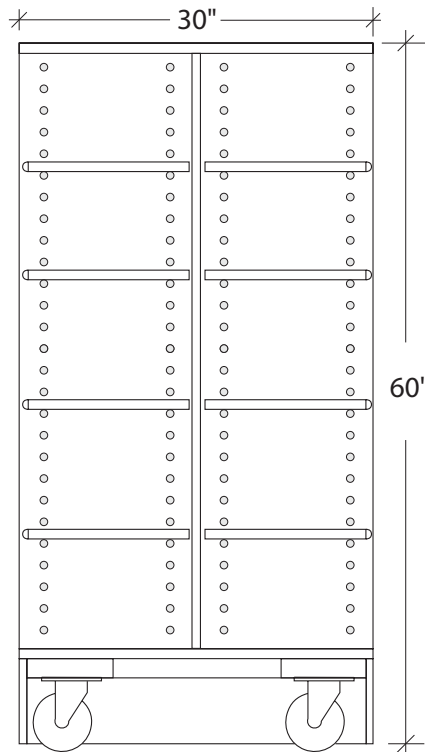
10 - Casework

Furniture and Fixtures



10 - Casework

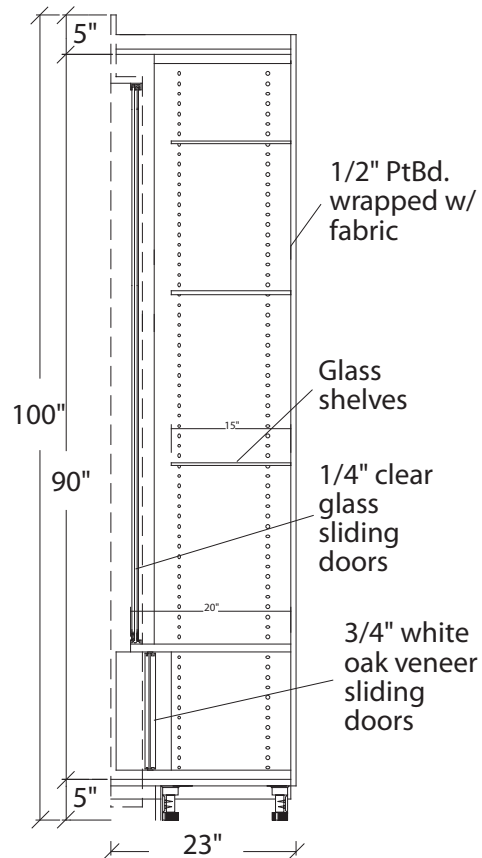
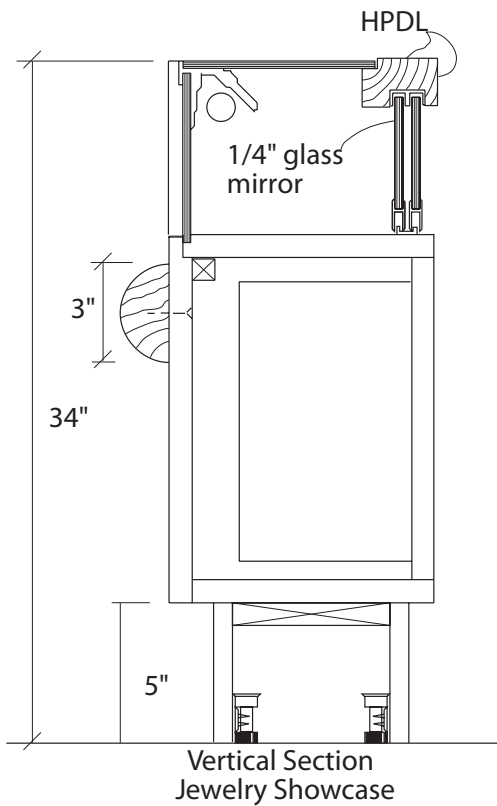
Furniture and Fixtures



Single and Double-sided Units with bullnosed shelves

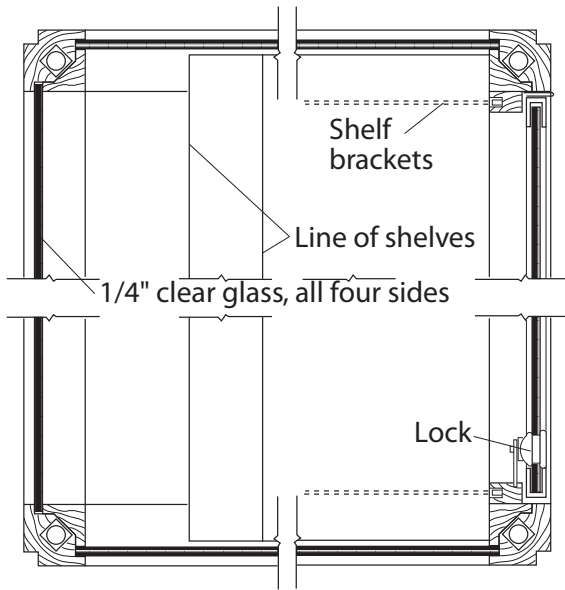
Finished back on single sided units

All exposed surfaces White Oak and White Oak veneer

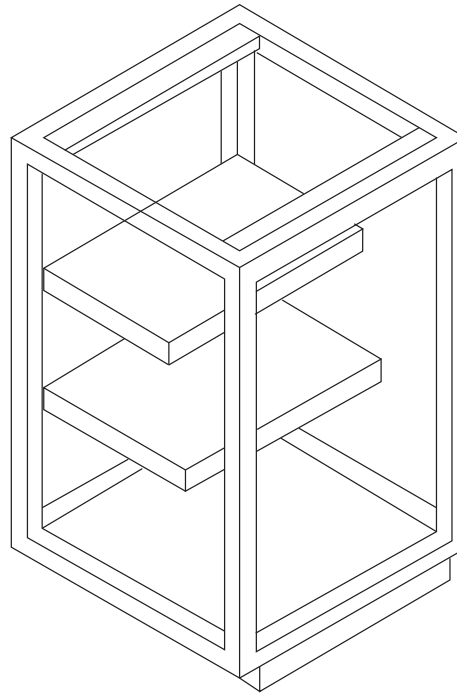


10 - Casework

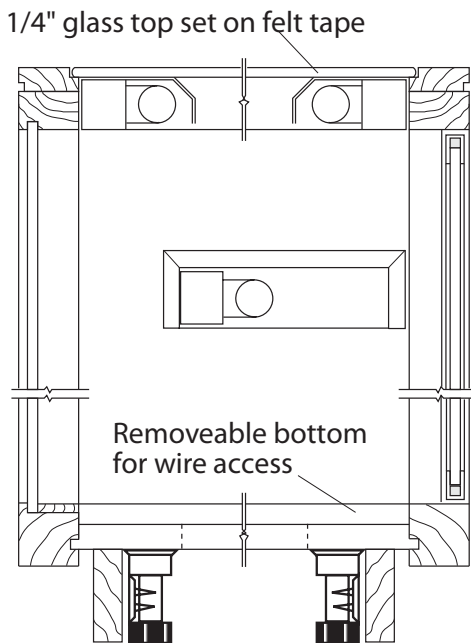
Furniture and Fixtures



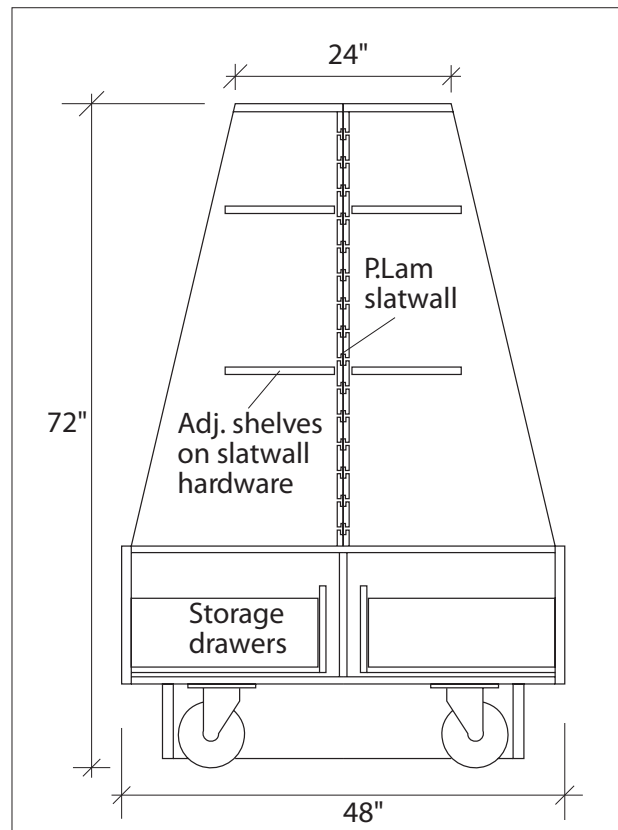
Plan Section



Isometric

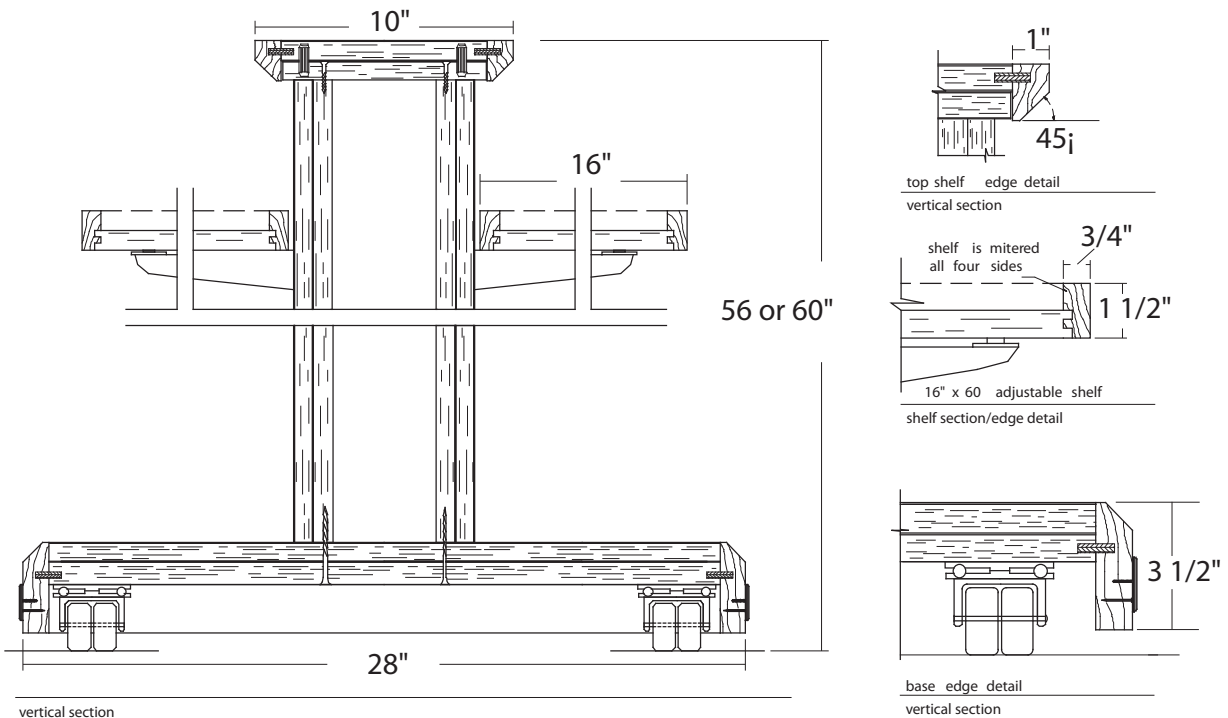
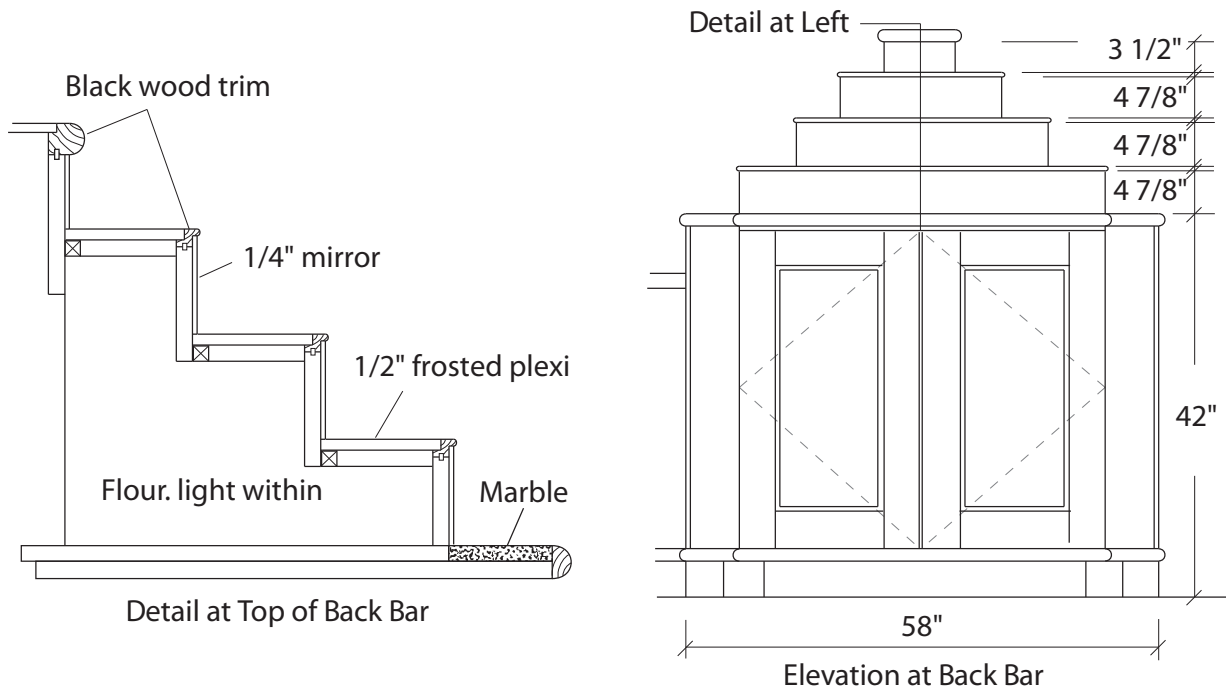


Vertical Section



10 - Casework

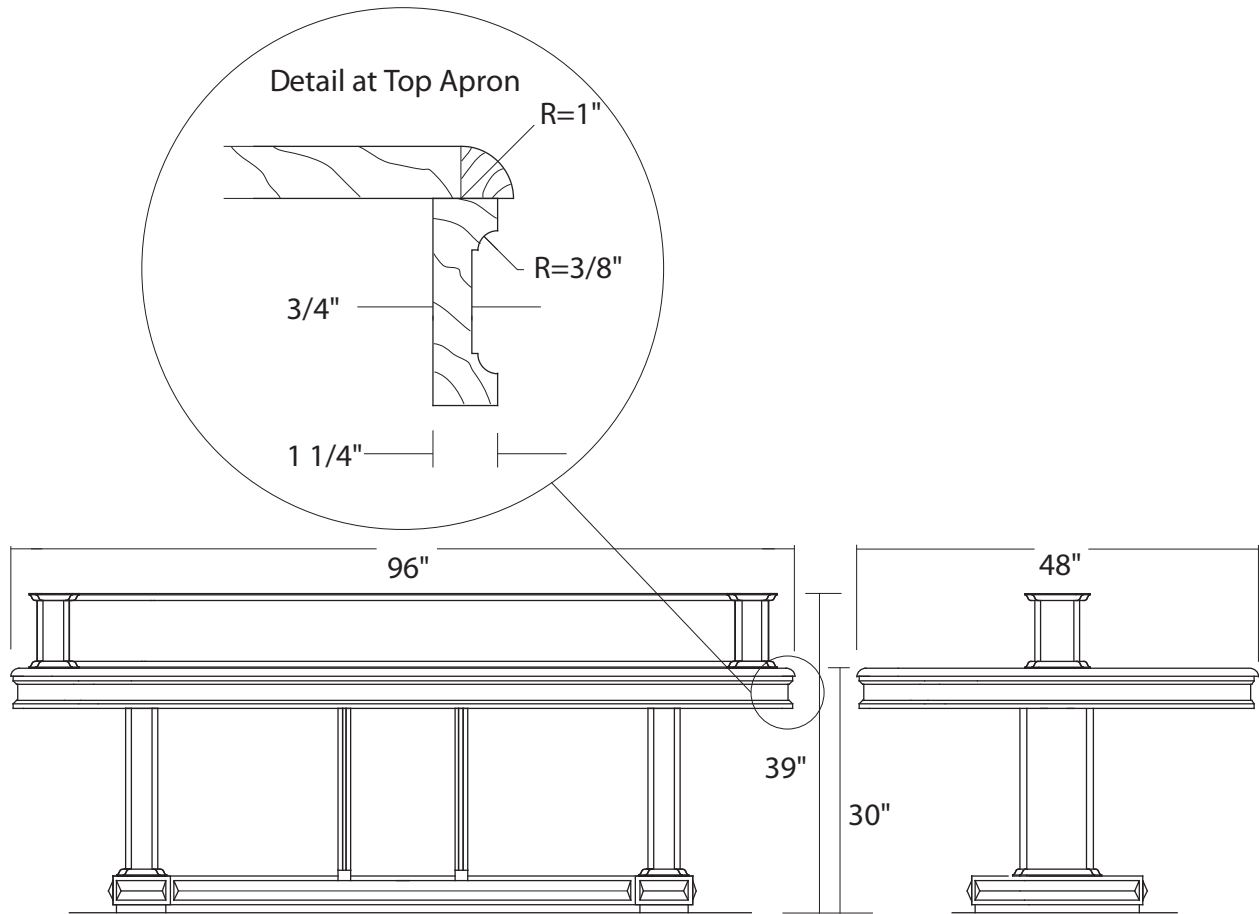
Furniture and Fixtures



Rolling Display Store Fixture

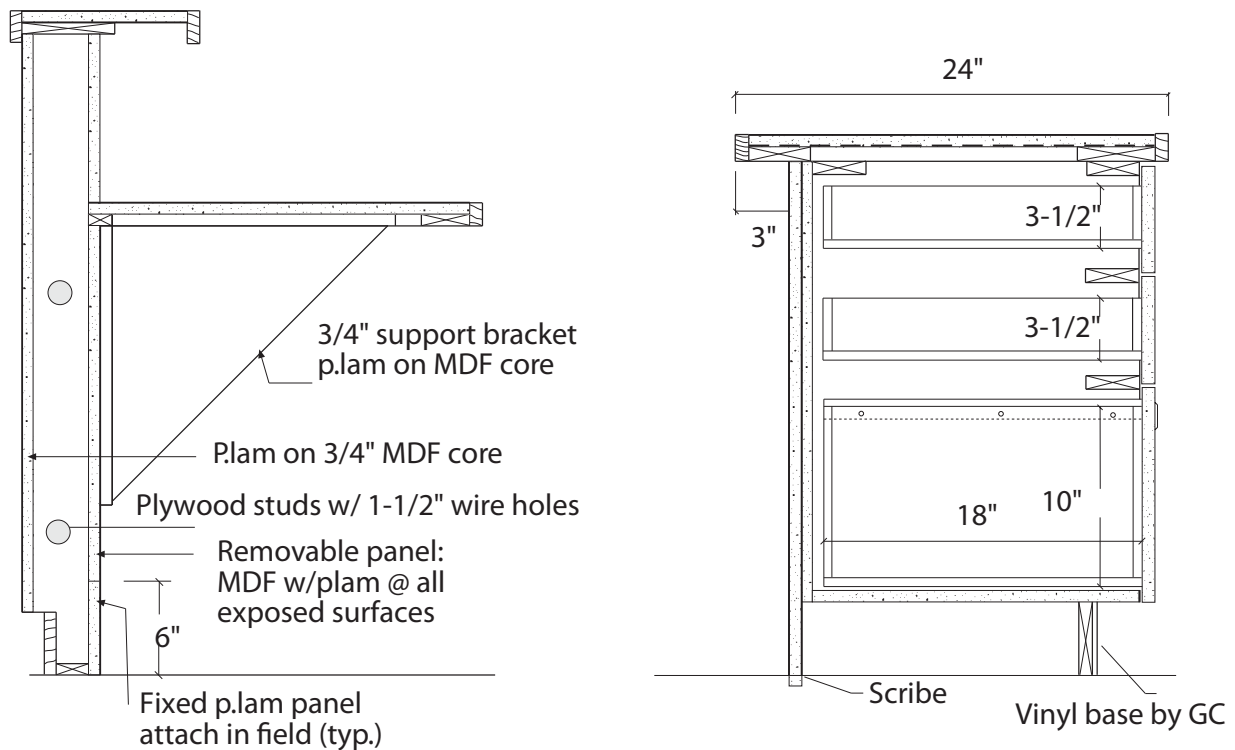
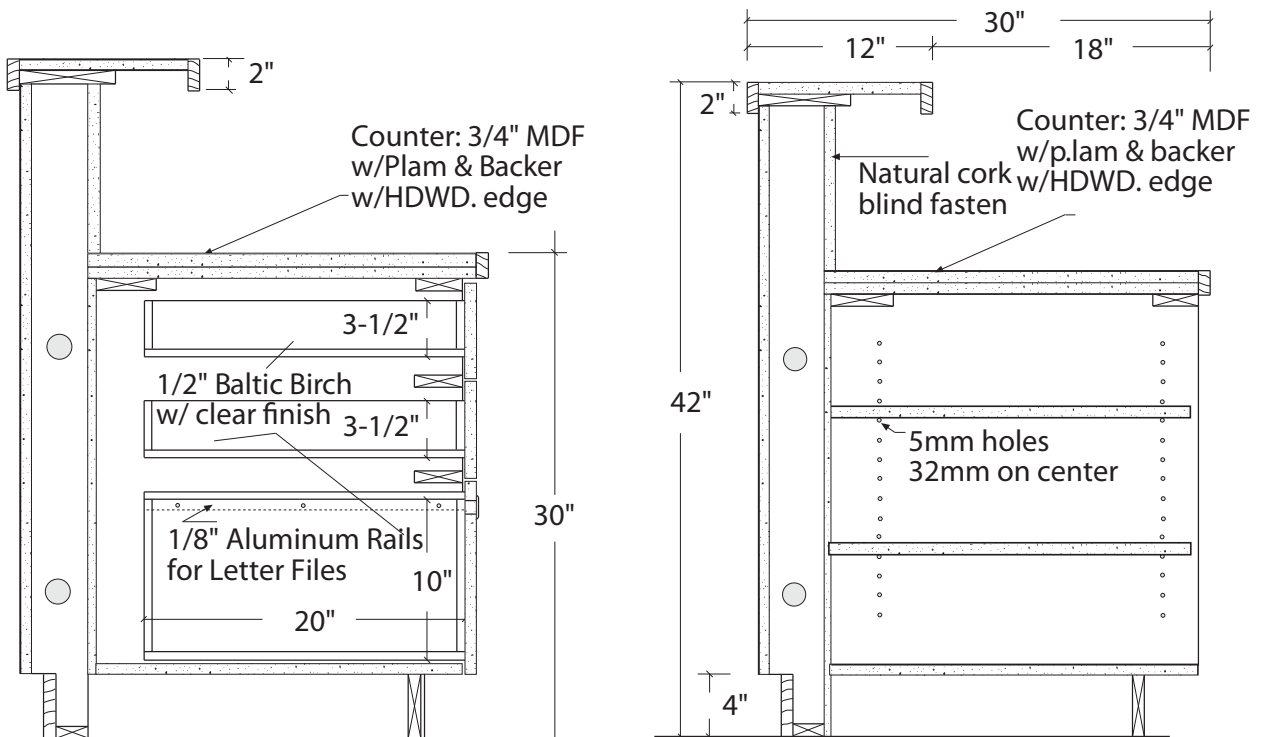
10 - Casework

Furniture and Fixtures



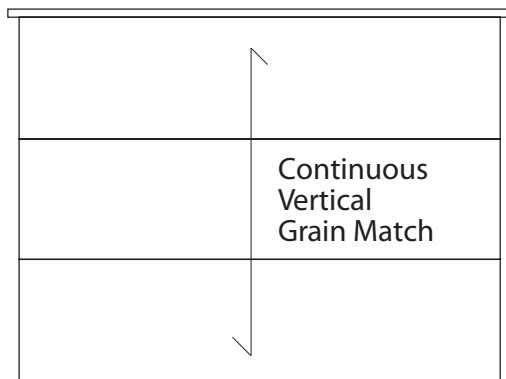
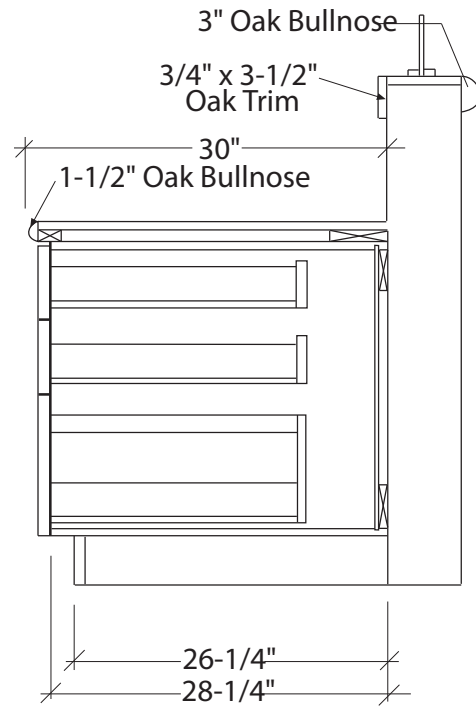
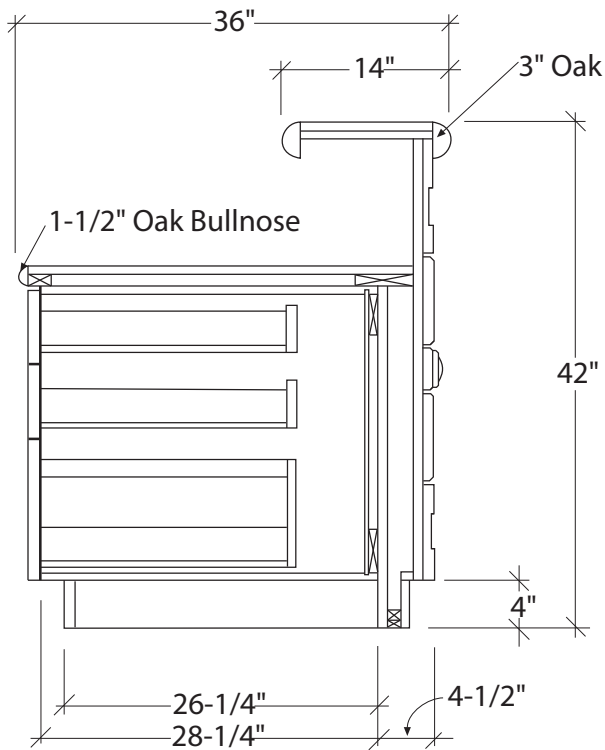
10 - Casework

Reception

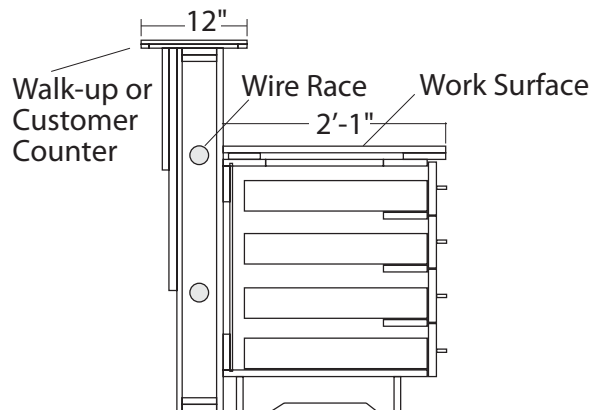


10 - Casework

Reception



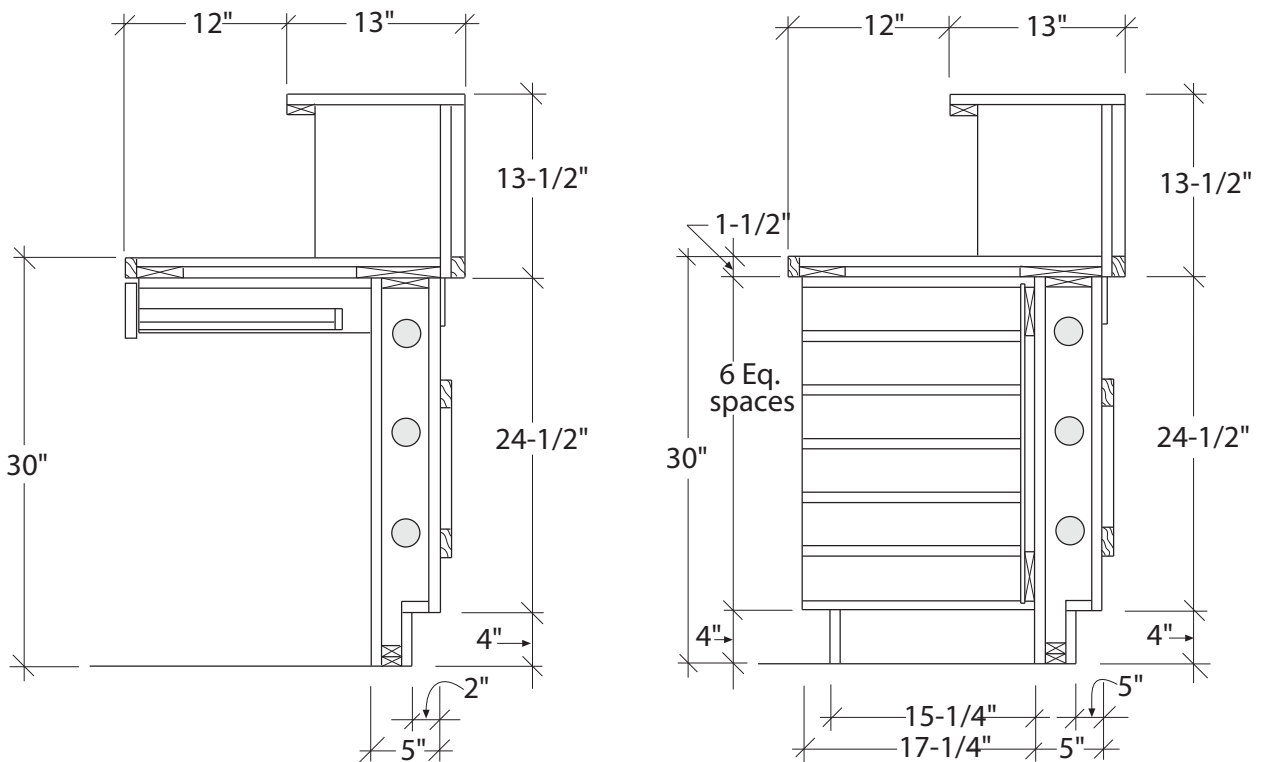
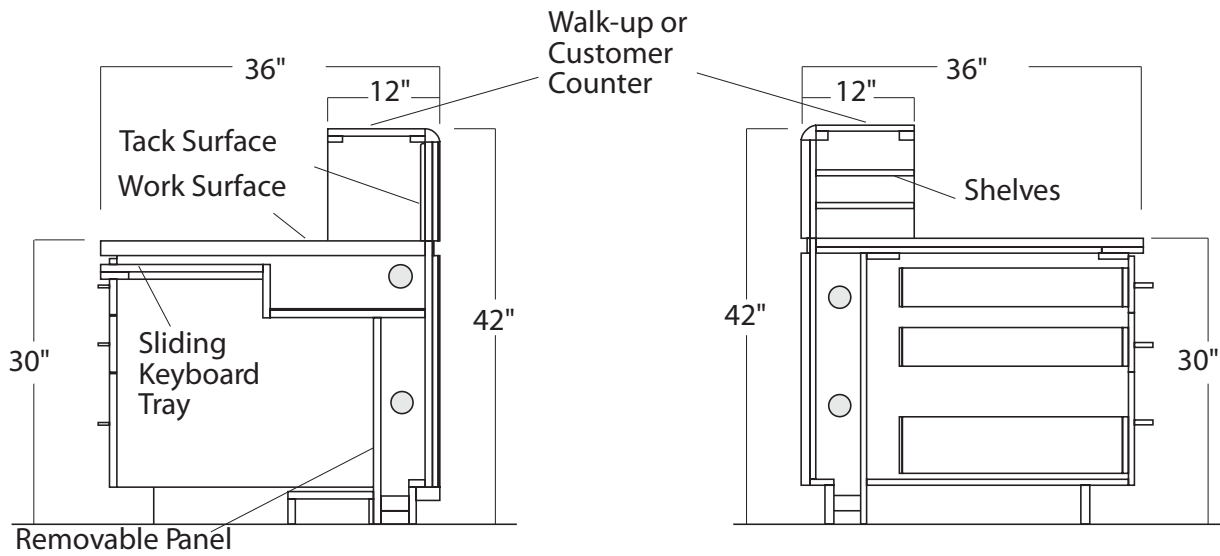
Front Elev. - Small Reception Desk w/ Drawers



Sect. thru Typ. Drawer Stack/Reception

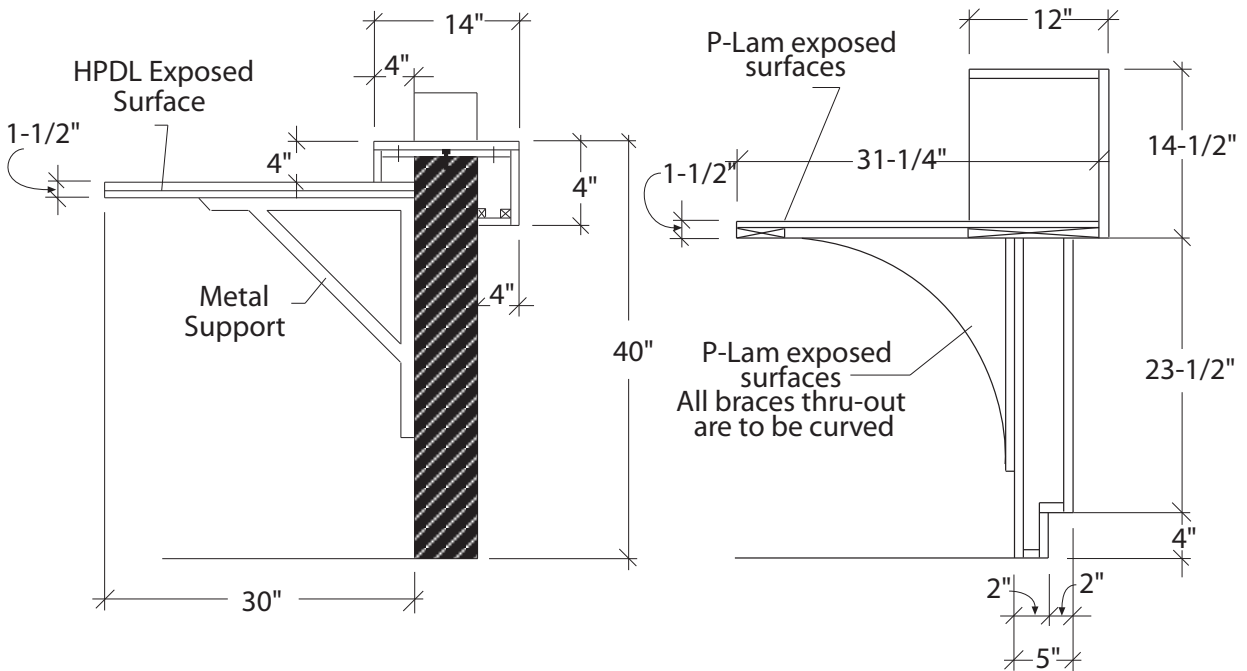
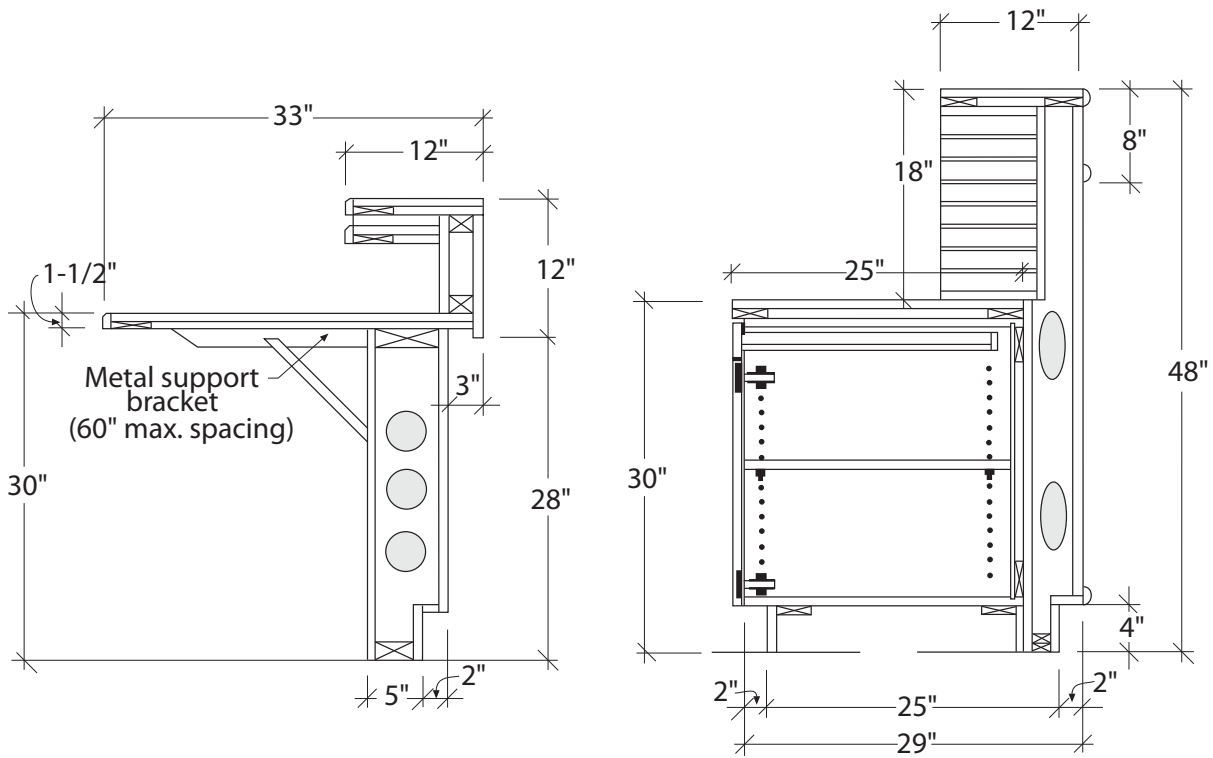
10 - Casework

Reception



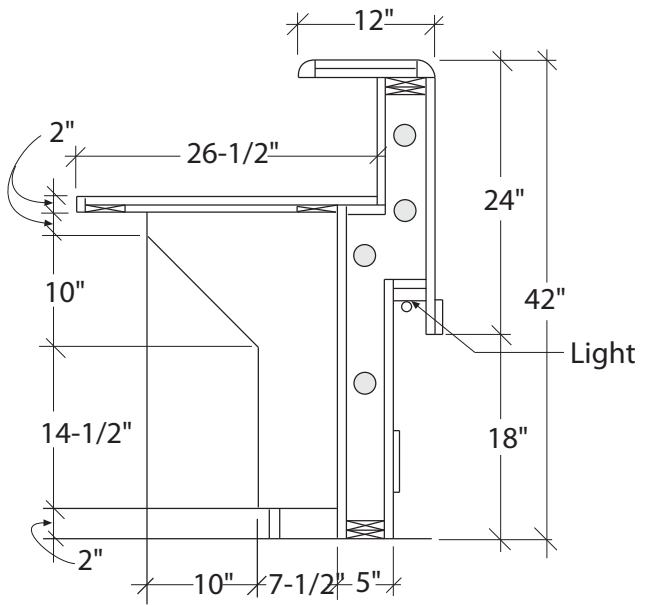
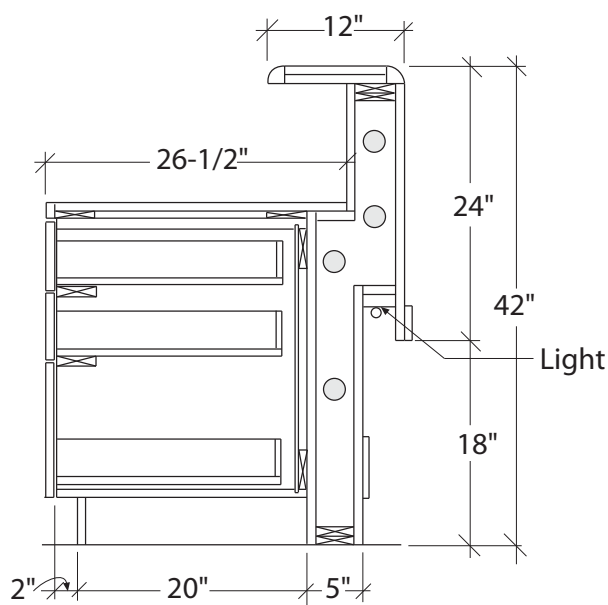
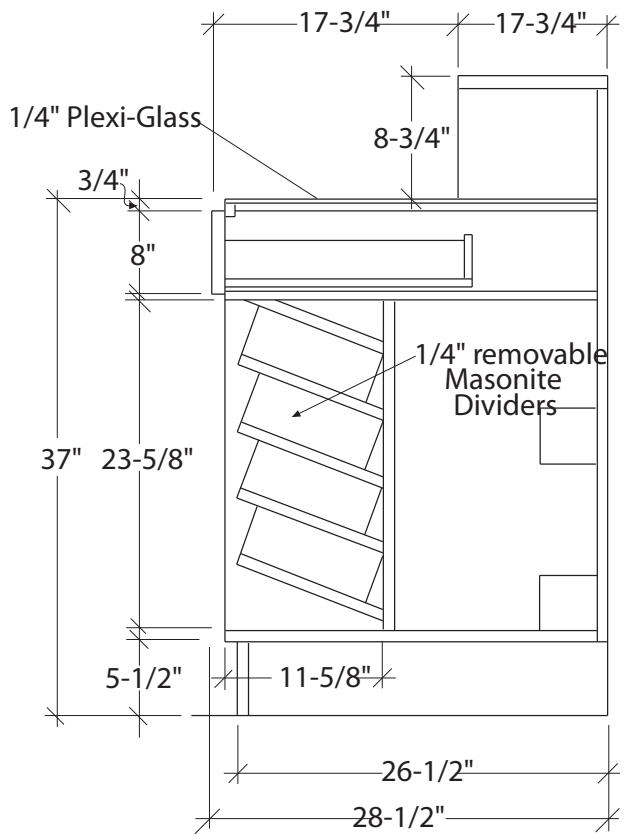
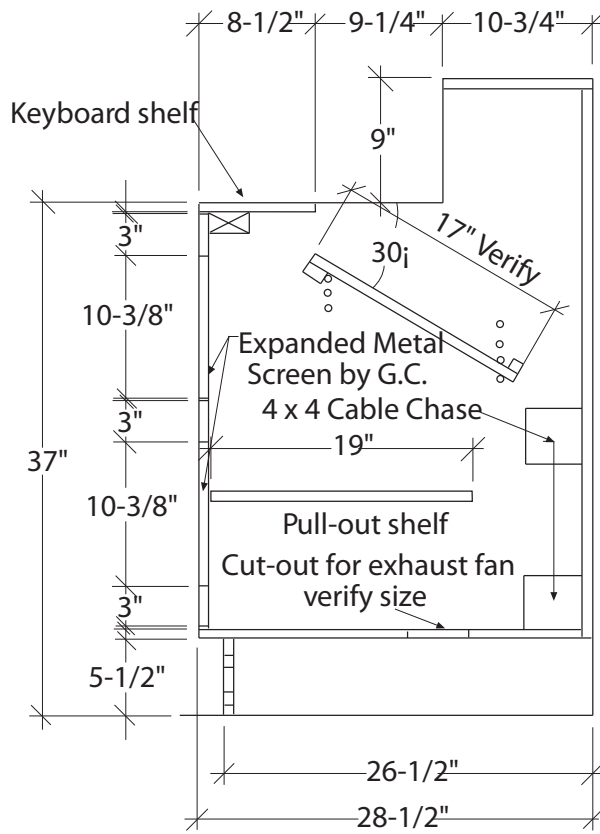
10 - Casework

Reception



10 - Casework

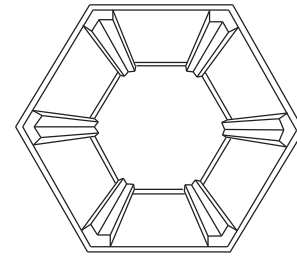
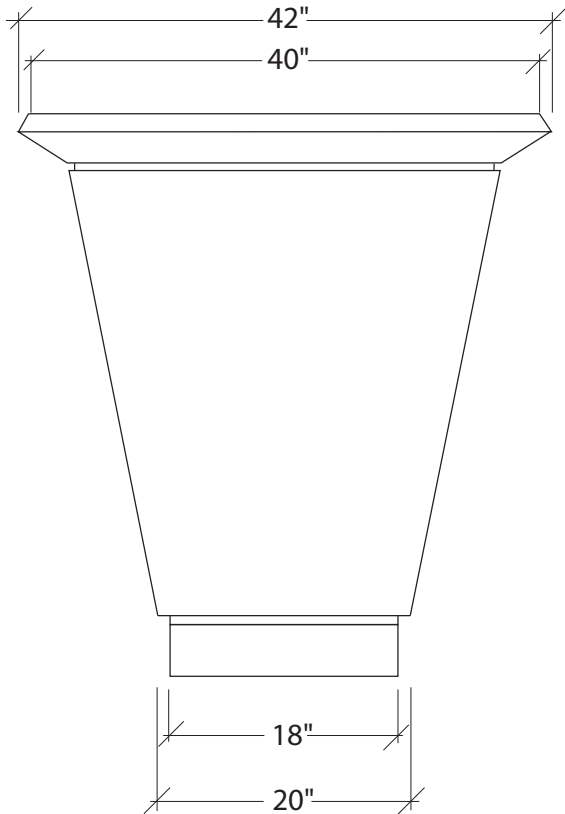
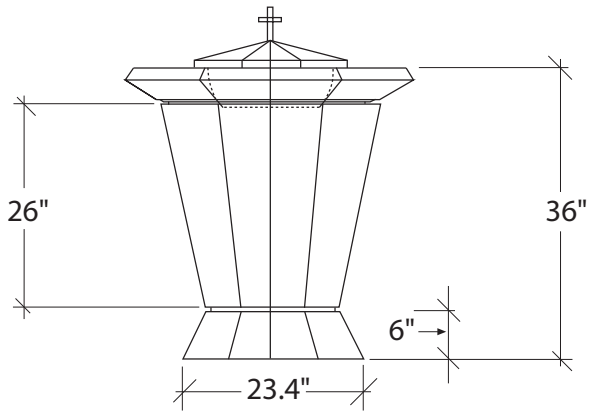
Reception



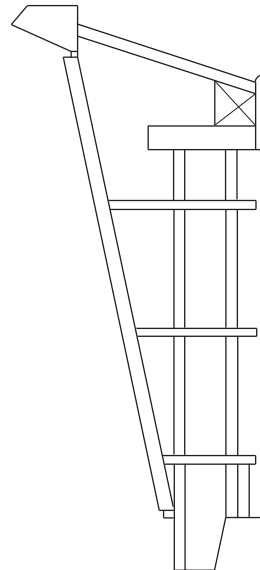
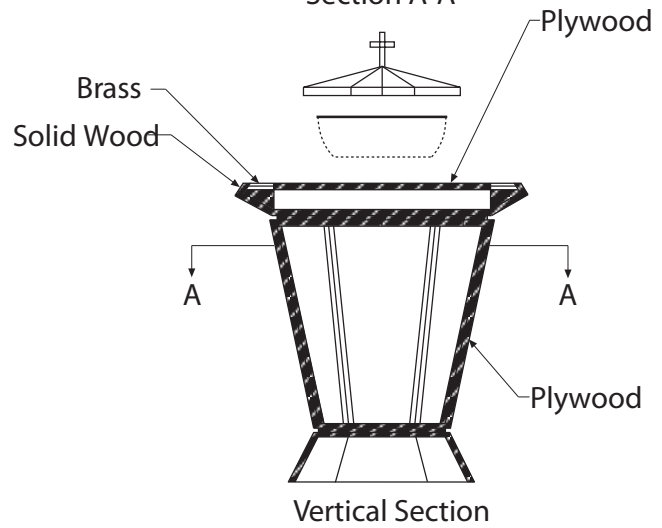
10 - Casework

Church Fittings

Baptismal Font



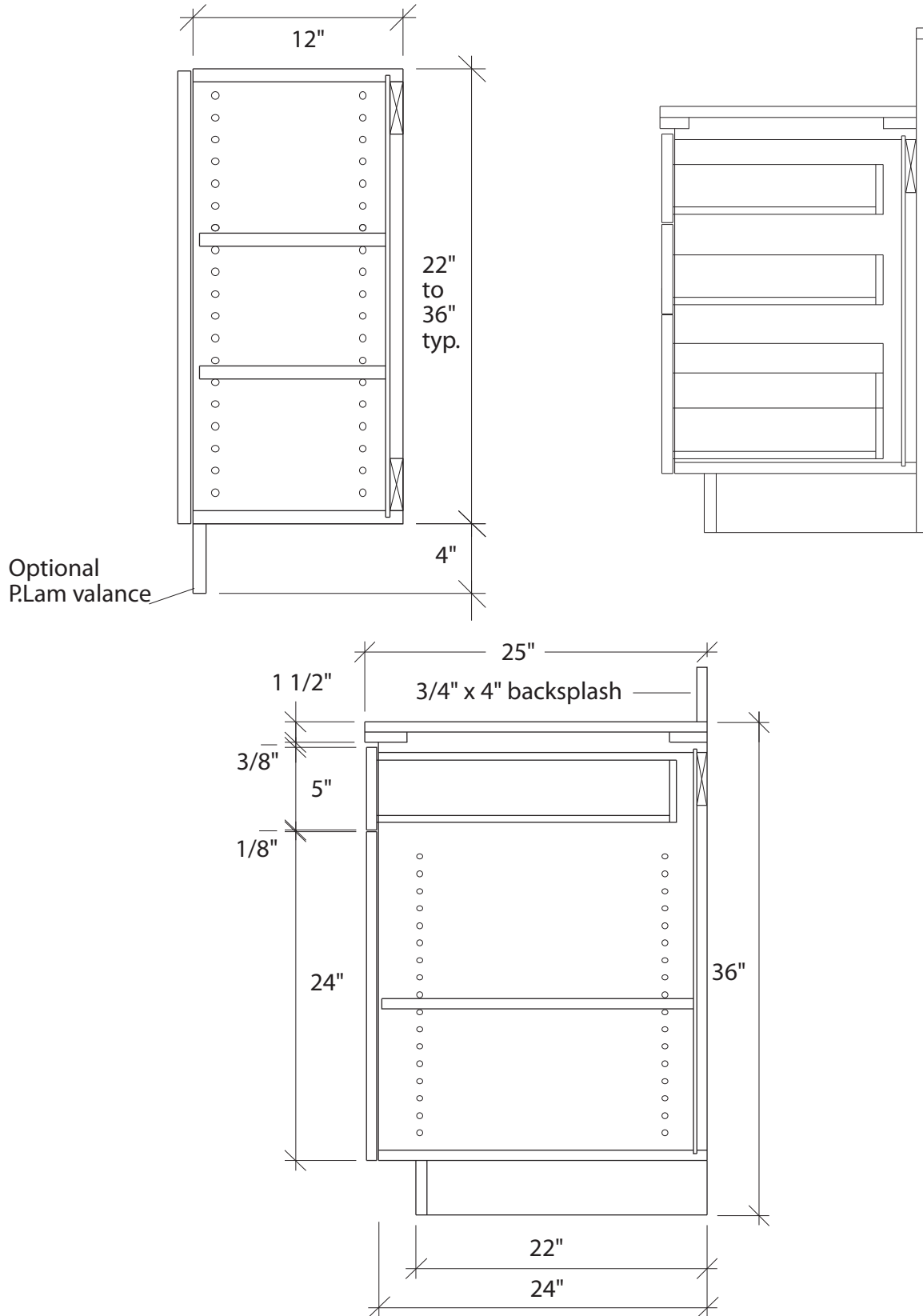
Section A-A



Lectern

10 - Casework

Basic Cabinetry



10 - Casework

Basic Cabinetry

